



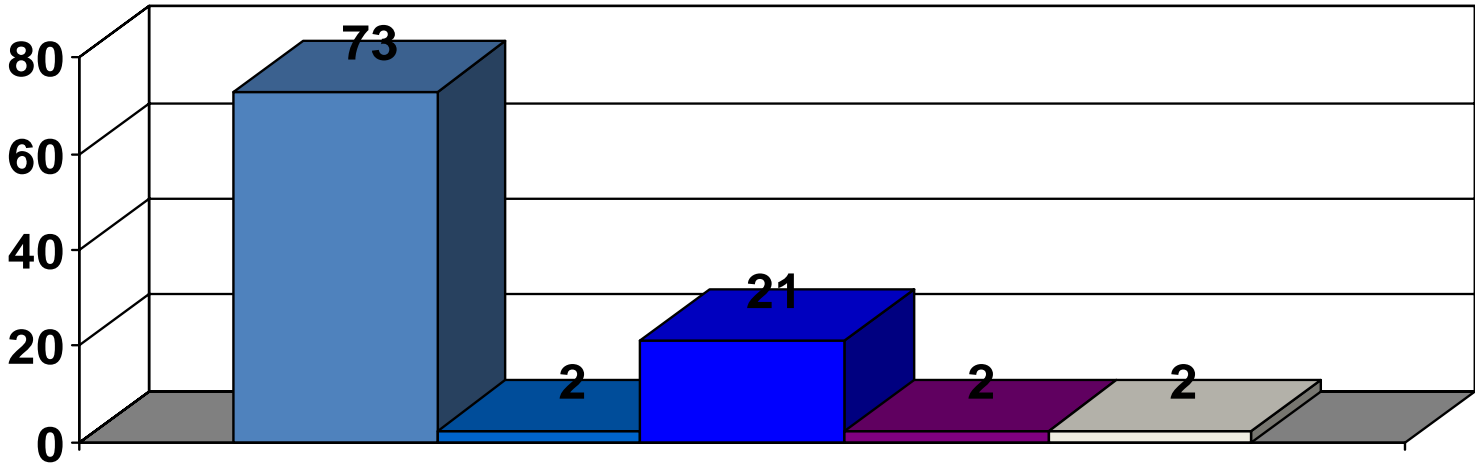
UNIVERSITY *of* MARYLAND  
MEDICAL SYSTEM

*Community Health Needs  
Assessment Survey Report  
May 2012*

# Baltimore City: All Zips

## Racial Composition

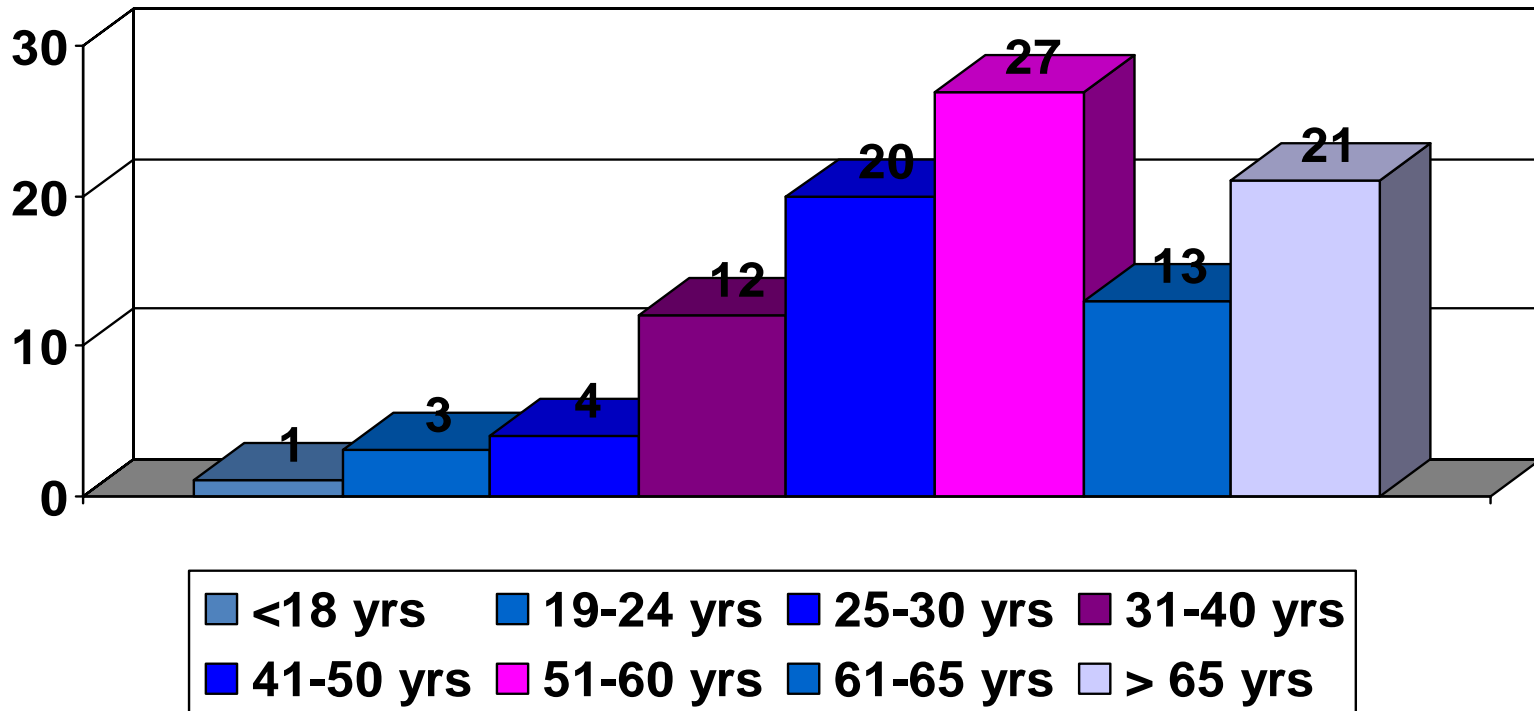
% of Respondents



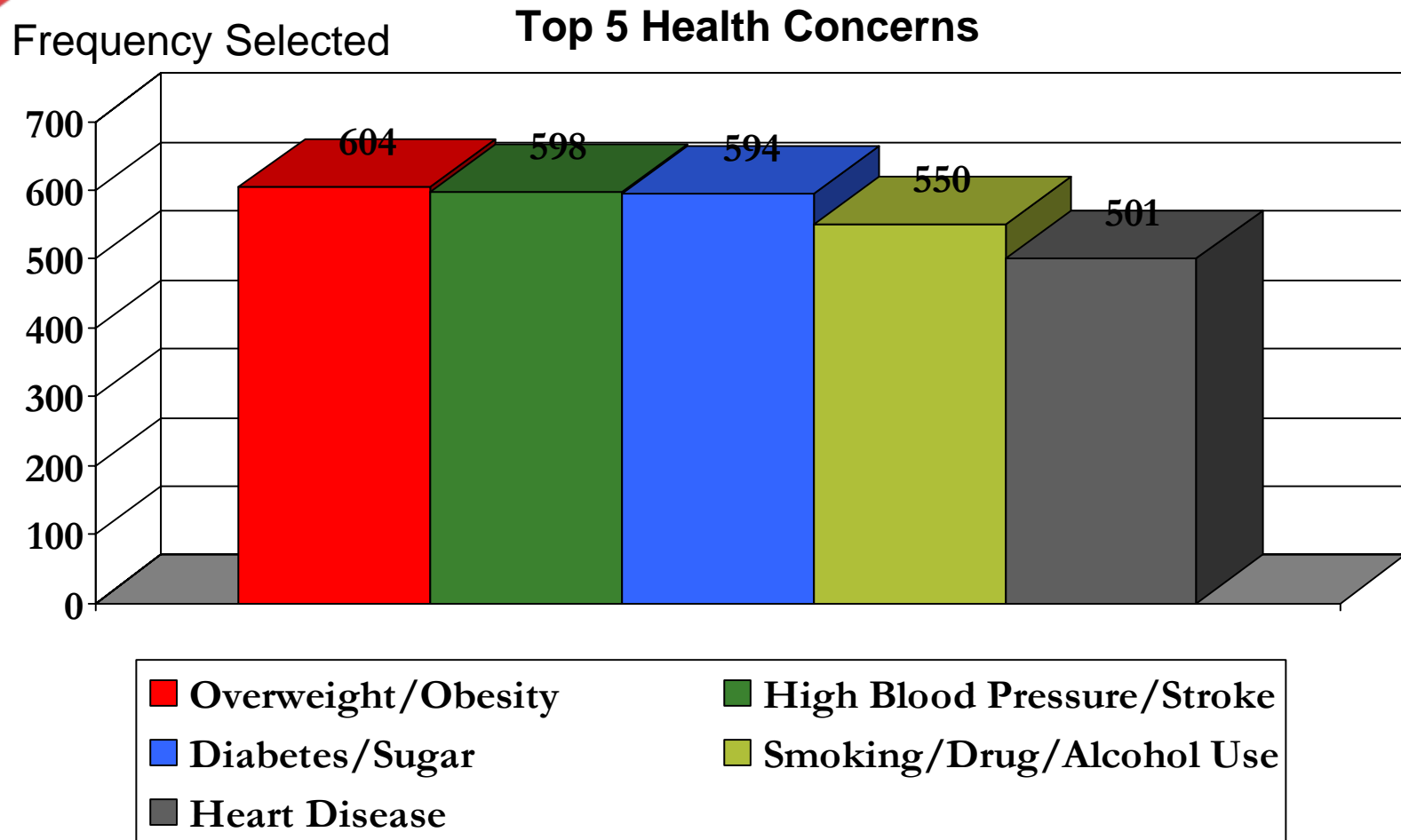
# Baltimore City: All Zips

## Age Group Composition

% of Respondents



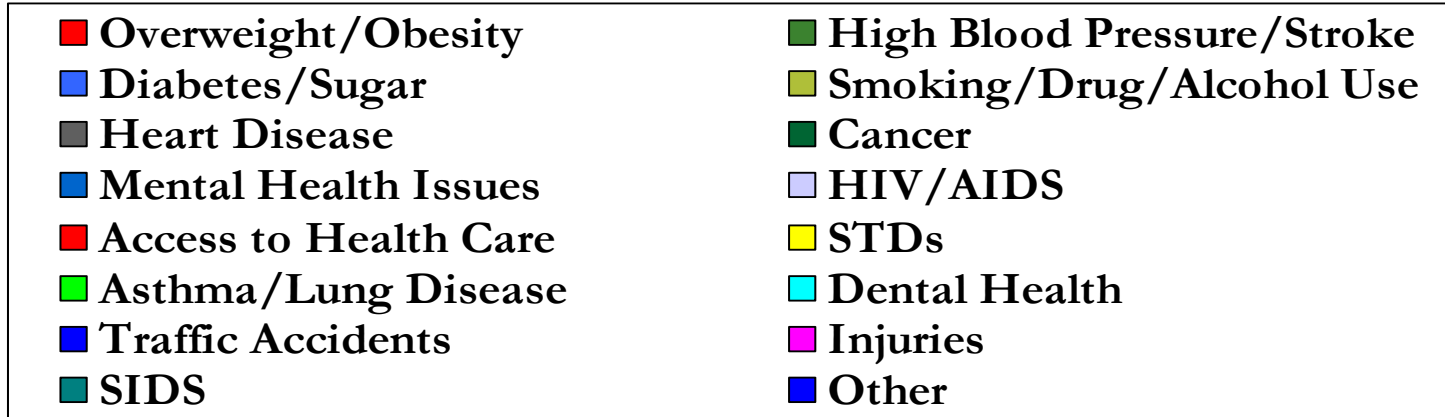
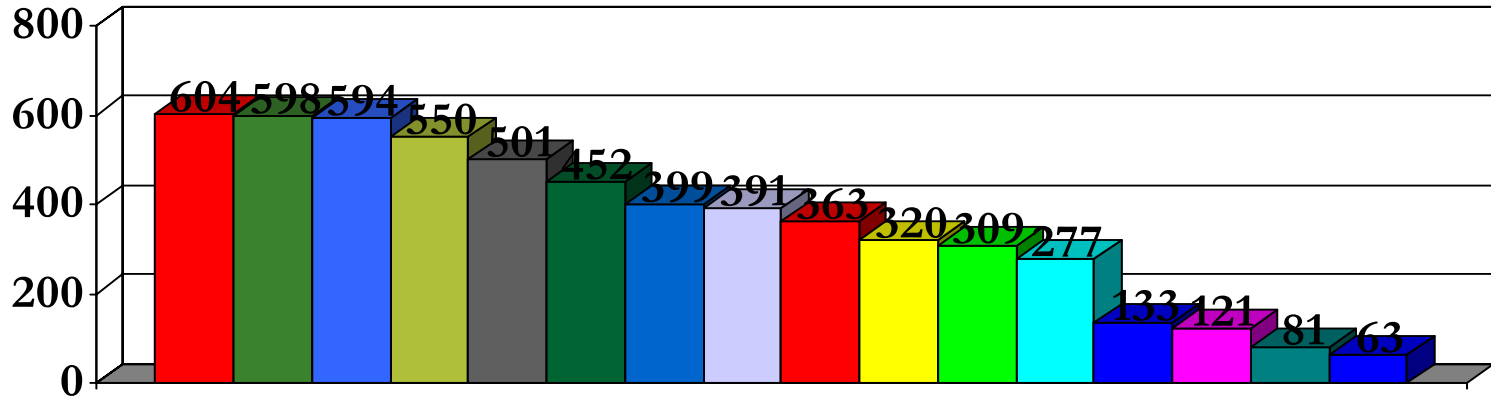
# Baltimore City: All Zips



# Baltimore City: All Zips

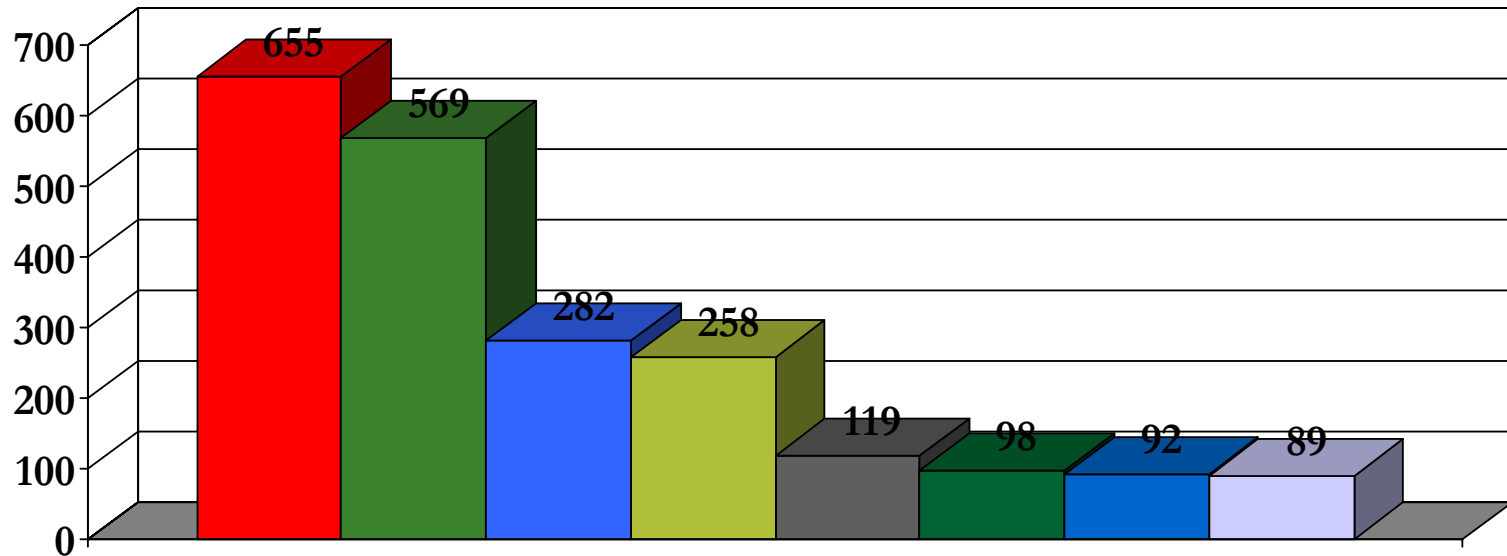
## Complete Ranking of All Health Concerns

Frequency Selected



# Baltimore City: All Zips

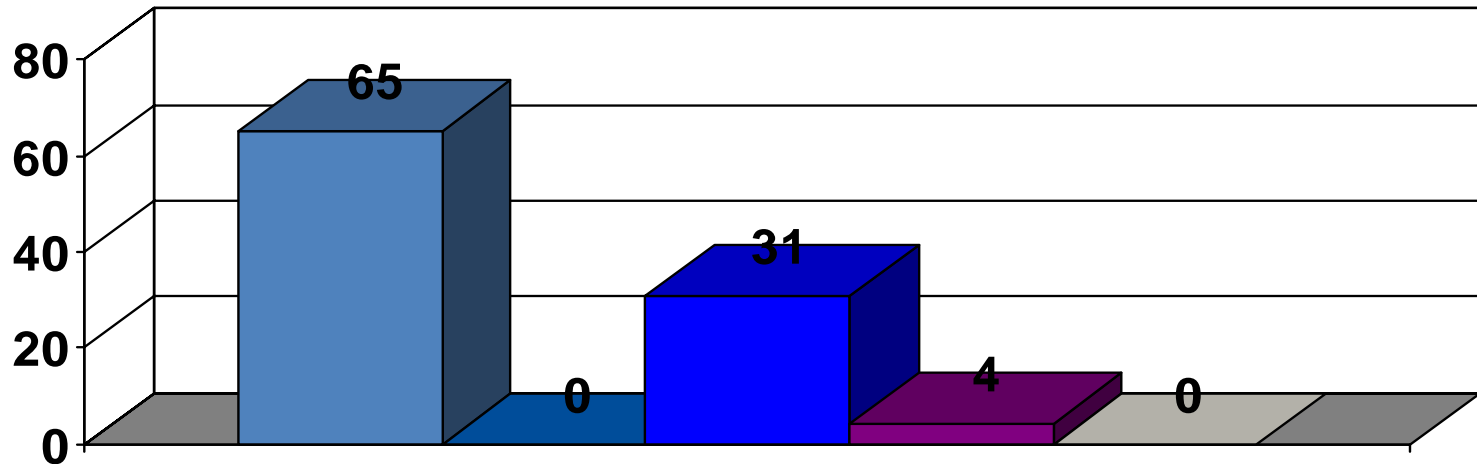
Frequency Selected **Complete Ranking of All Barriers to Health Care**



# Baltimore City: 21201

## Racial Composition

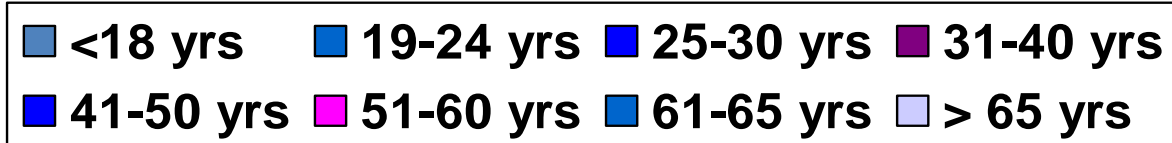
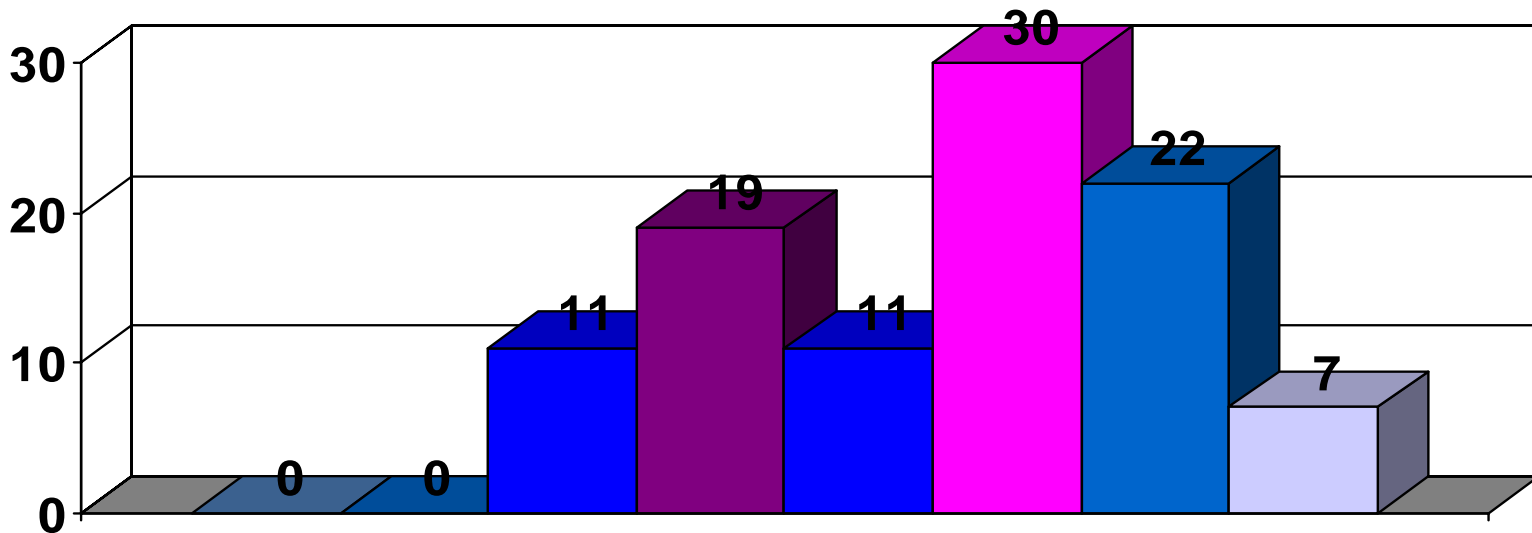
% of Respondents



# Baltimore City: 21201

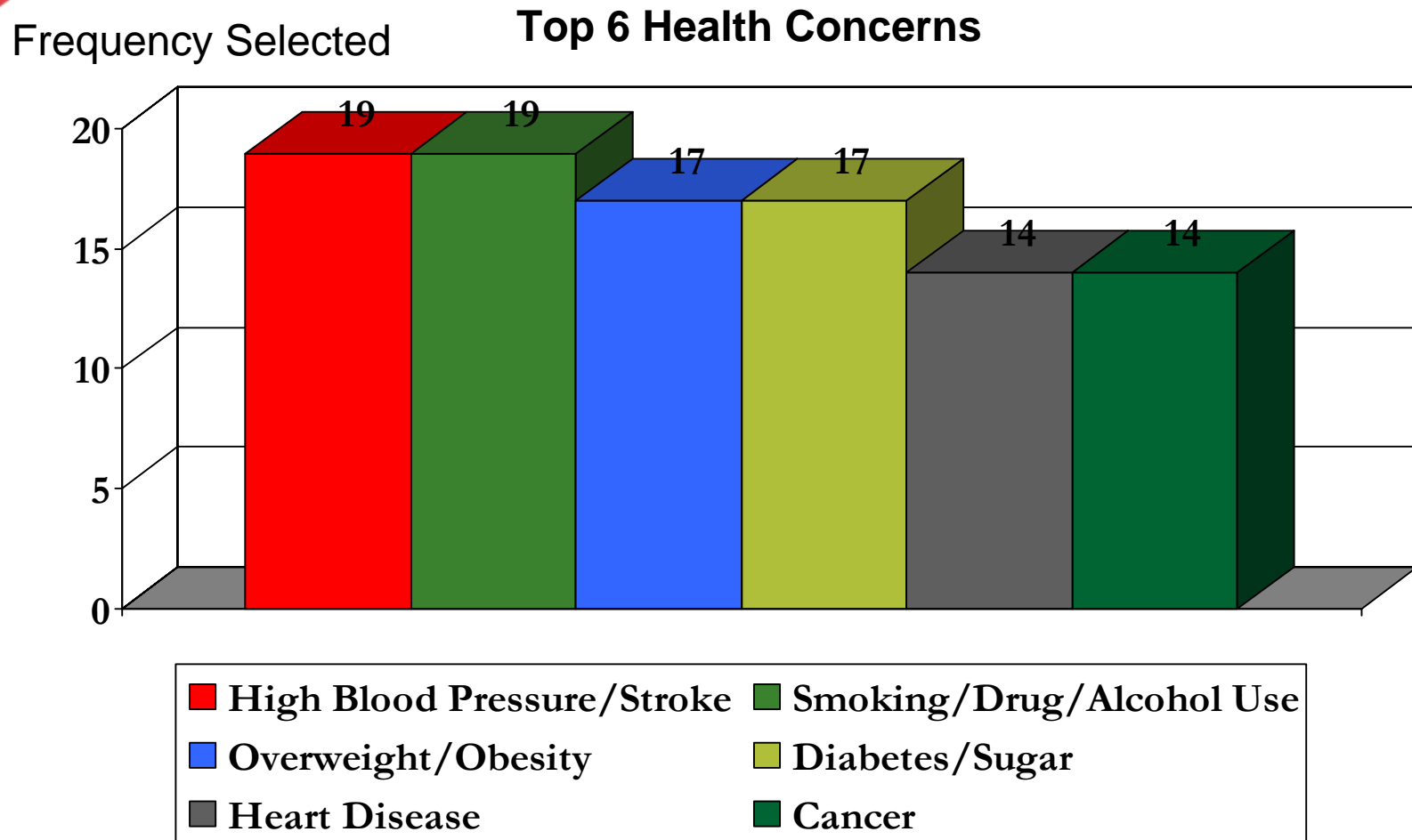
## Age Group Composition

% of Respondents





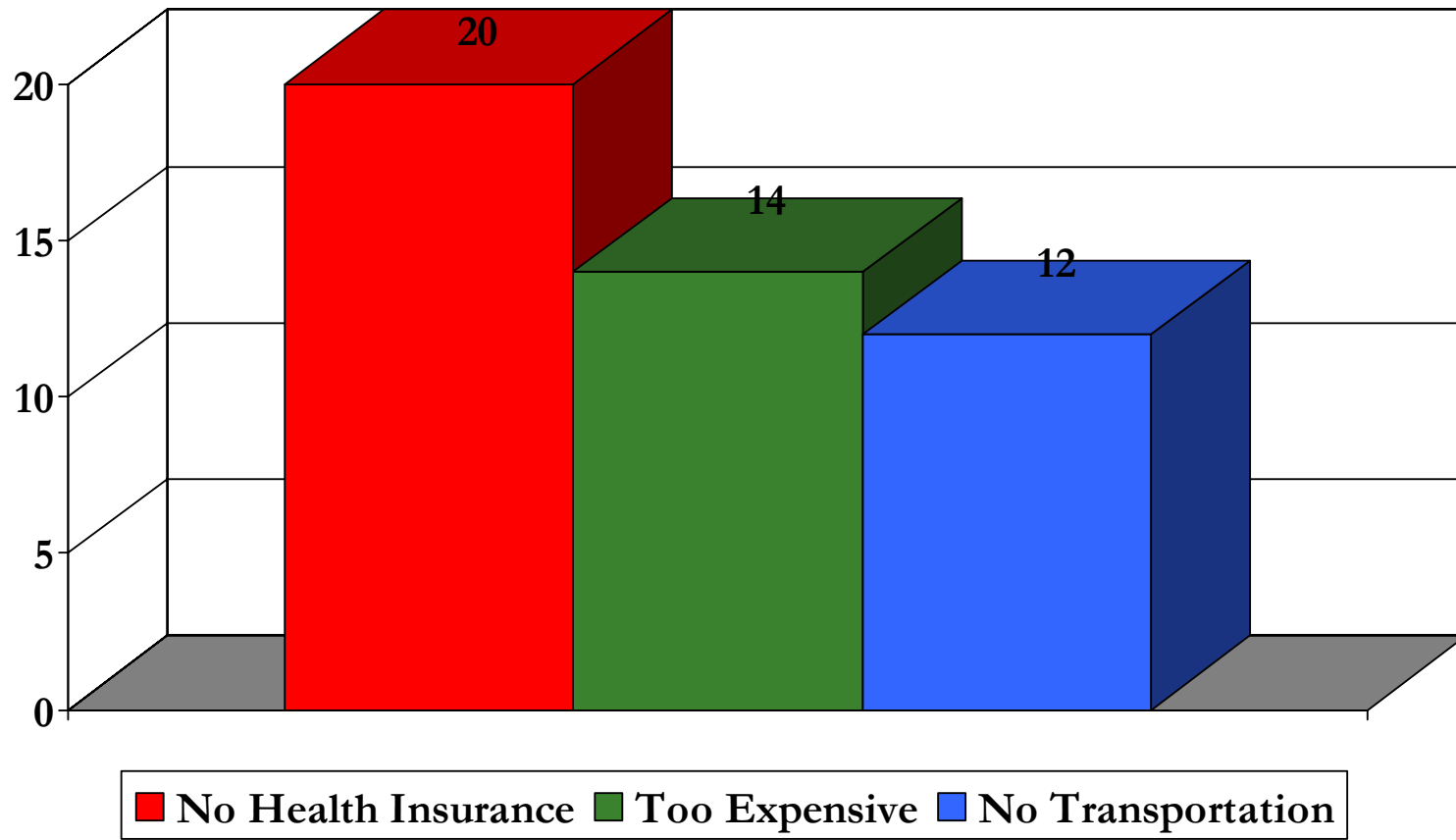
# Baltimore City: 21201



# Baltimore City: 21201

## Top Barriers to Health Care

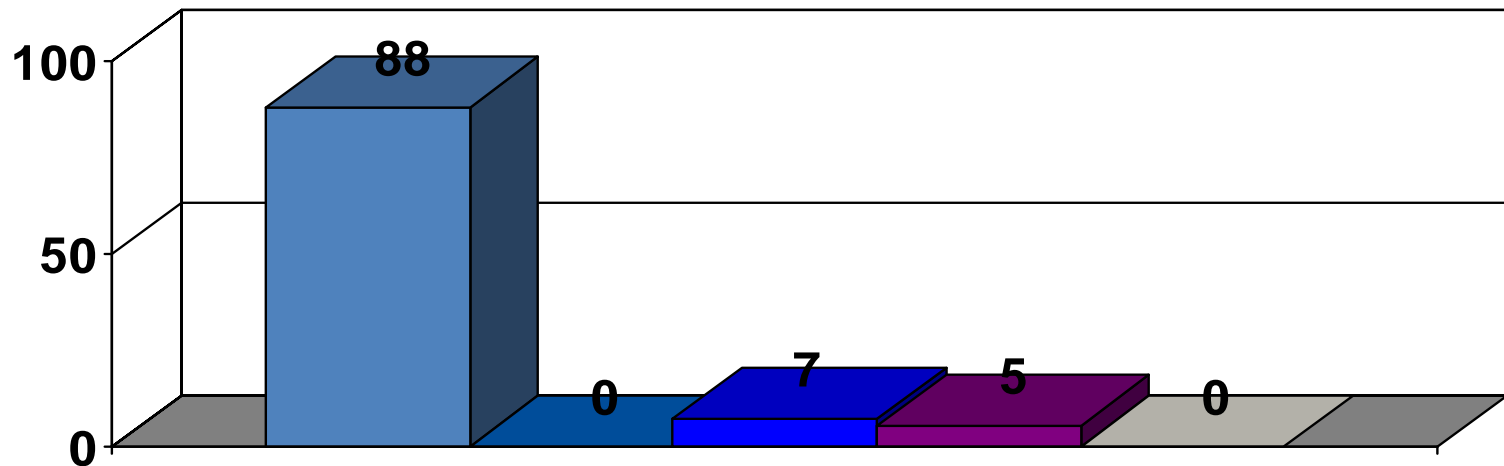
Frequency Selected



# Baltimore City: 21207

## Racial Composition

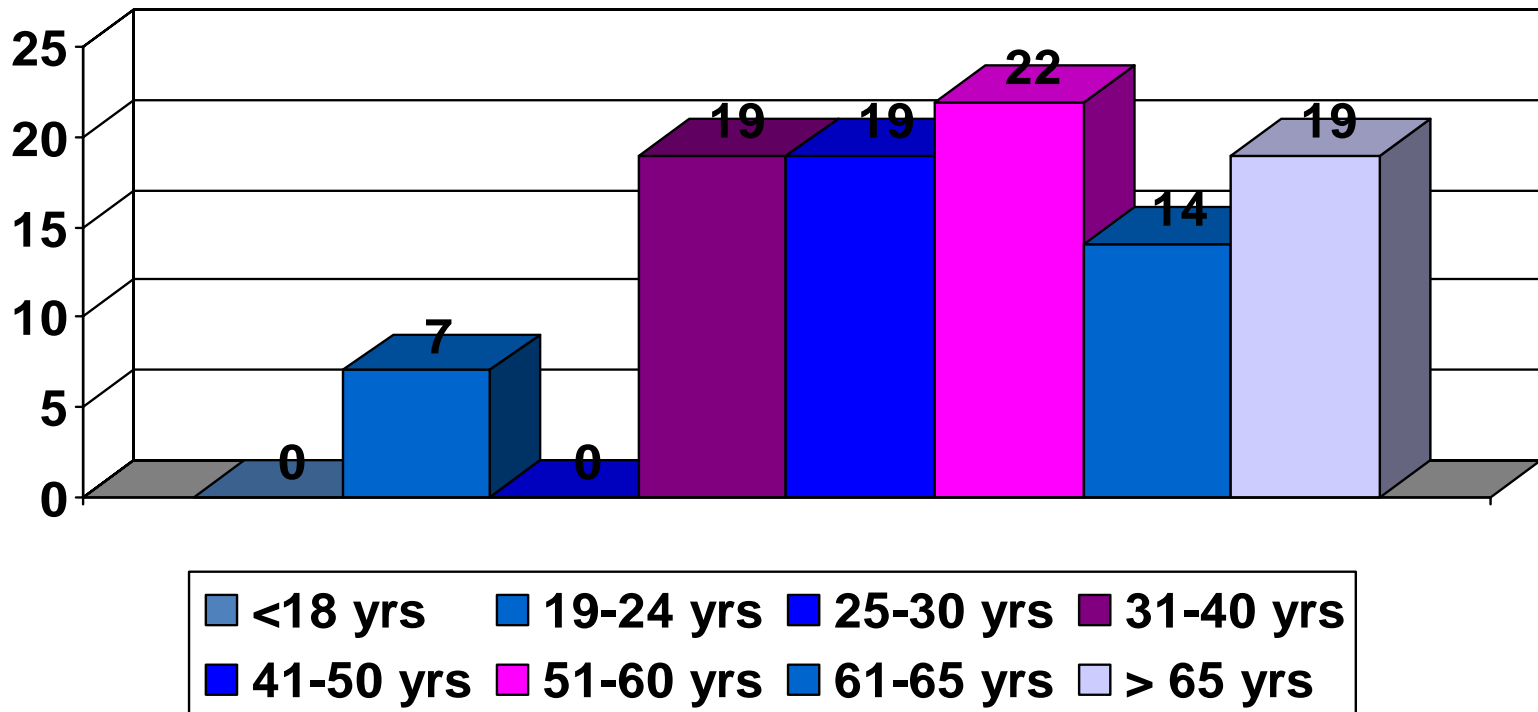
% of Respondents



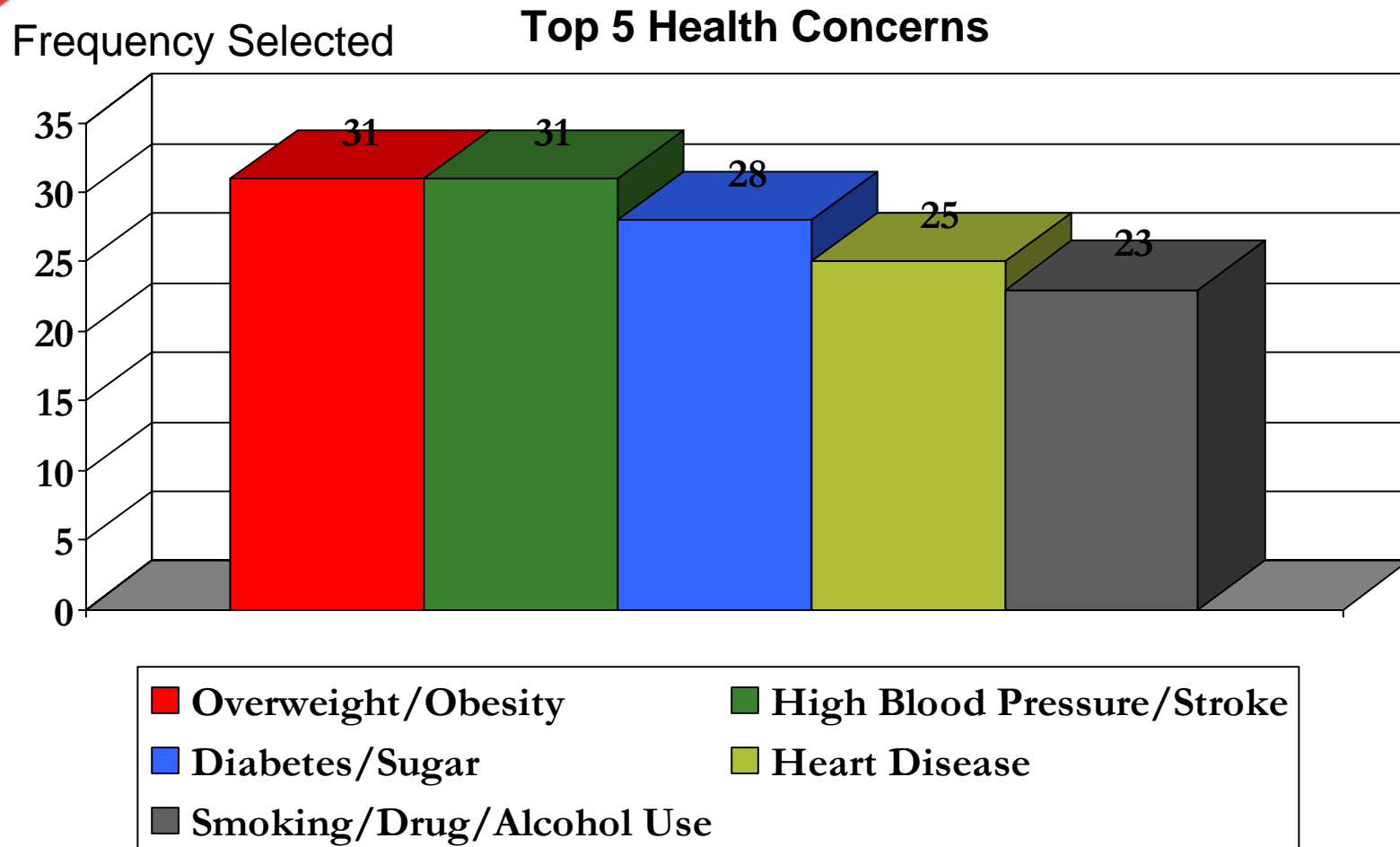
# Baltimore City: 21207

## Age Group Composition

% of Respondents



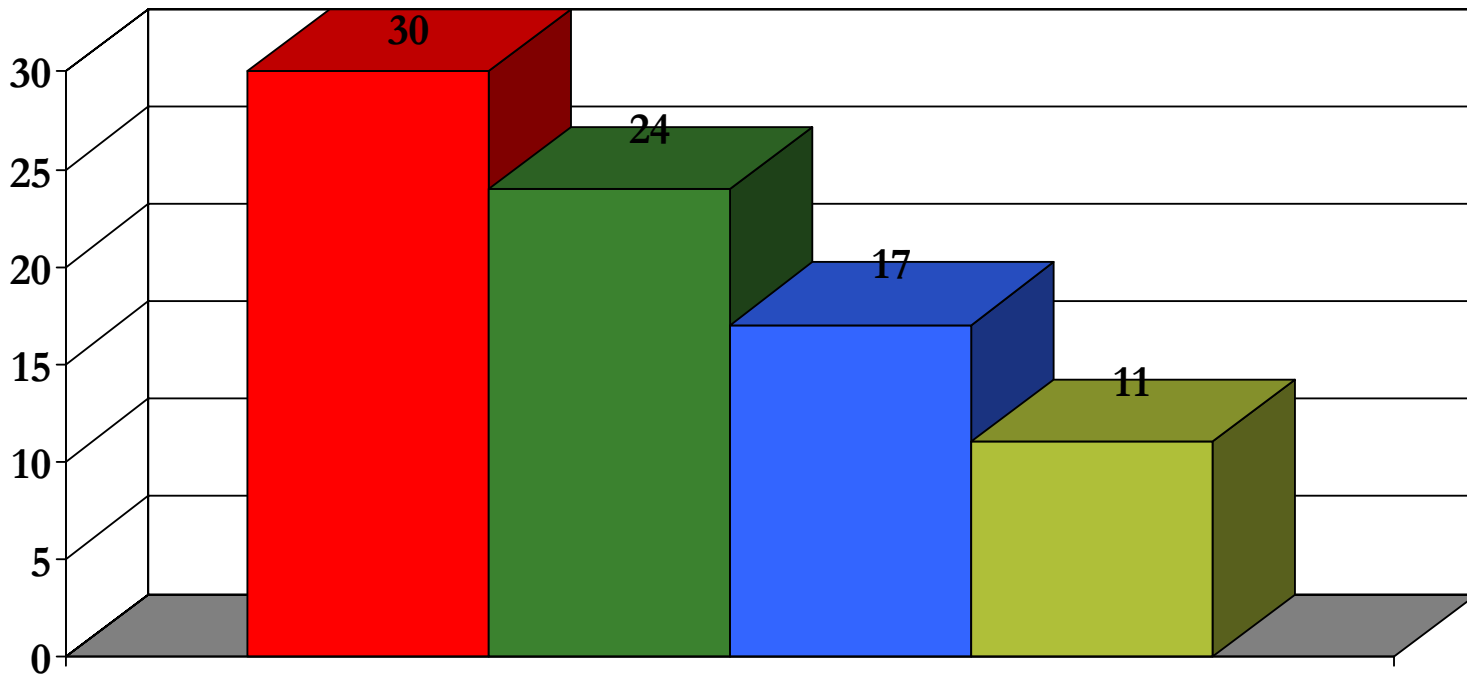
# Baltimore City: 21207



# Baltimore City: 21207

## Top Barriers to Health Care

Frequency Selected

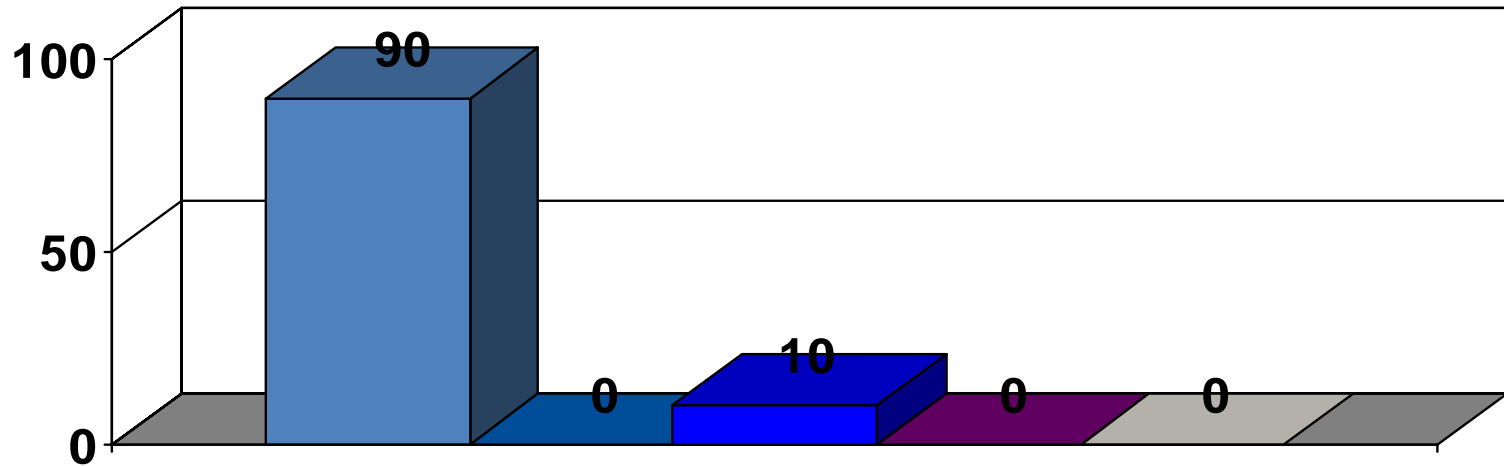


**No Health Insurance**    **Too Expensive**  
**Local MDs Not in Plan**    **No Transportation**

# Baltimore City: 21213

## Racial Composition

% of Respondents



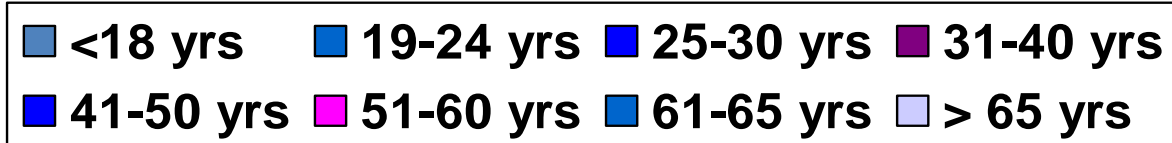
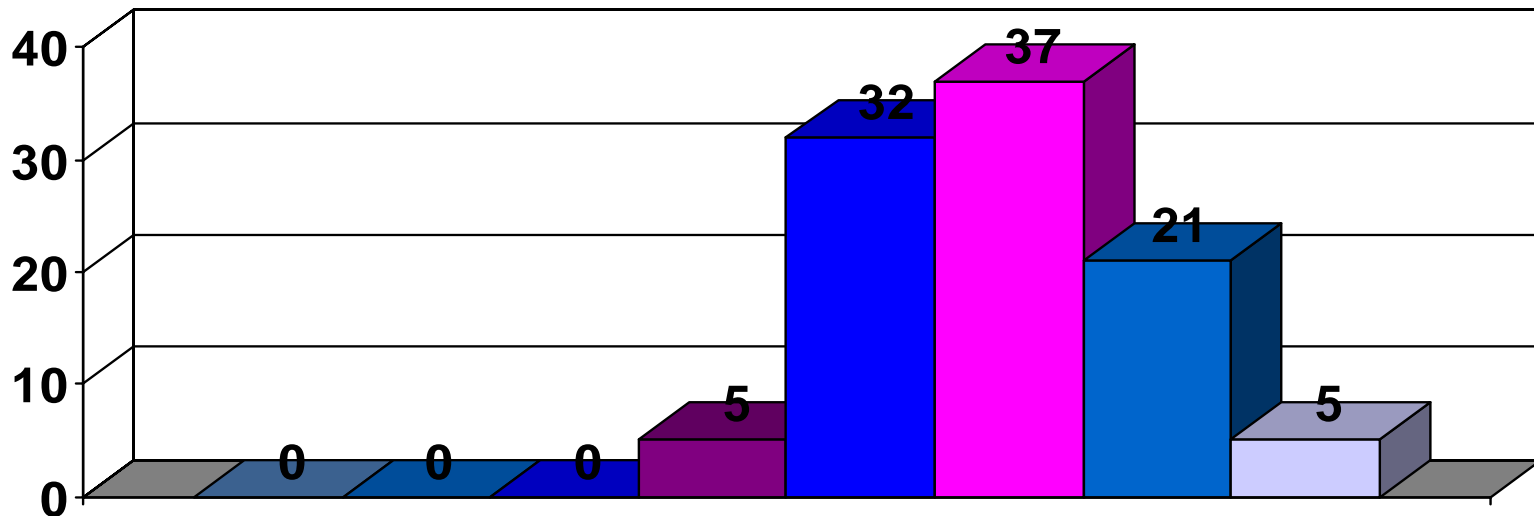
N = 20

Sample sizes <30 are not completely reliable

# Baltimore City: 21213

## Age Group Composition

% of Respondents



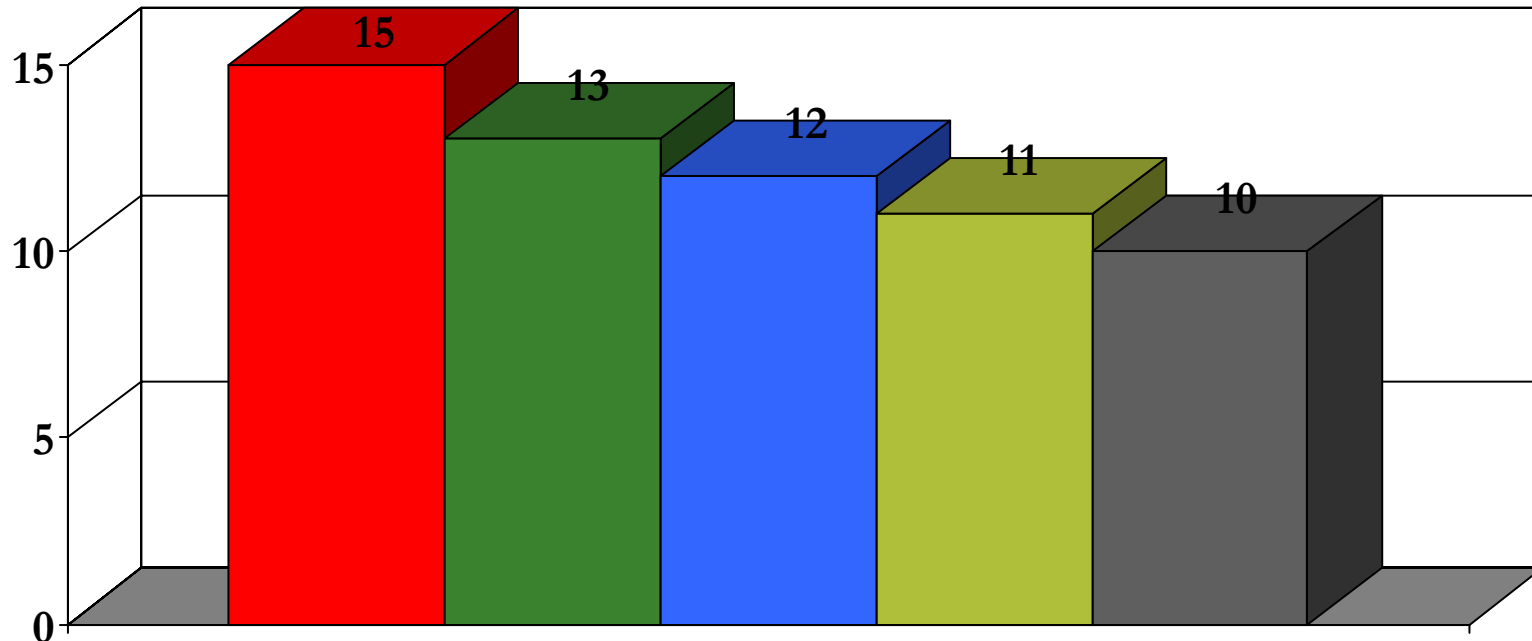
N = 20

Sample sizes <30 are not completely reliable



# Baltimore City: 21213

## Top 5 Health Concerns



- High Blood Pressure/Stroke
- Diabetes/Sugar
- Overweight/Obesity
- Smoking/Drug/Alcohol Use
- Asthma/Lung Disease

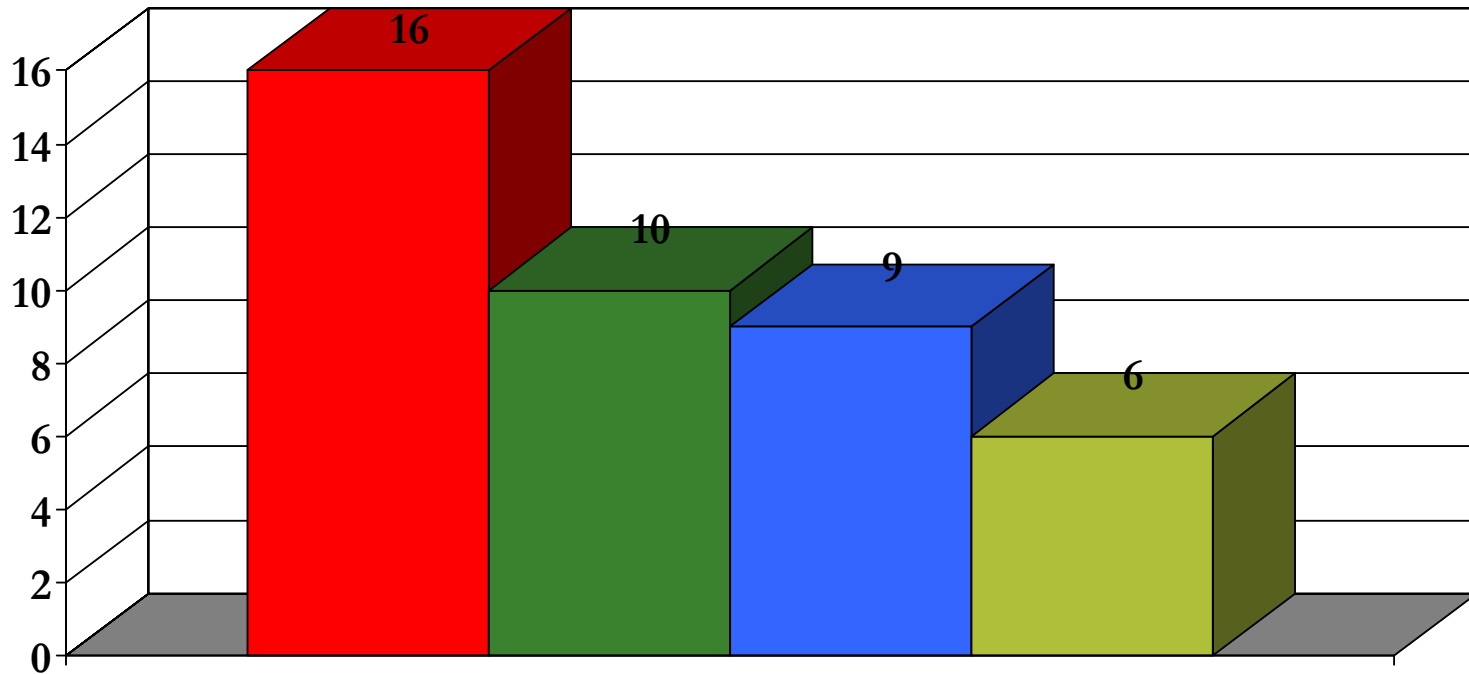
N = 20

Sample sizes <30 are not completely reliable

# Baltimore City: 21213

## Top Barriers to Health Care

Frequency Selected



**No Health Insurance**

**No Transportation**

**Too Expensive/Can't Afford It**

**Local MDs Not Part of Plan**

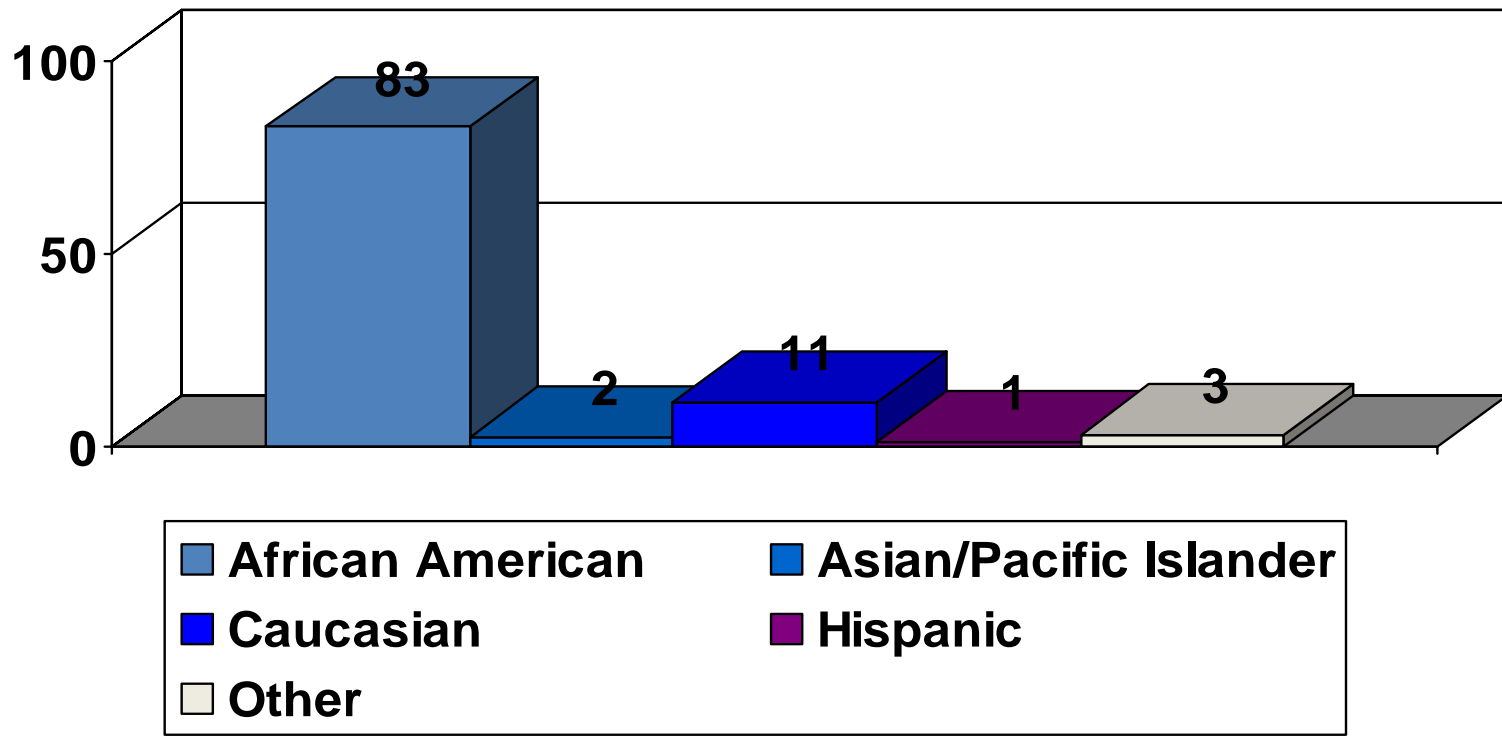
N = 20

Sample sizes <30 are not completely reliable

# Baltimore City: 21215

## Racial Composition

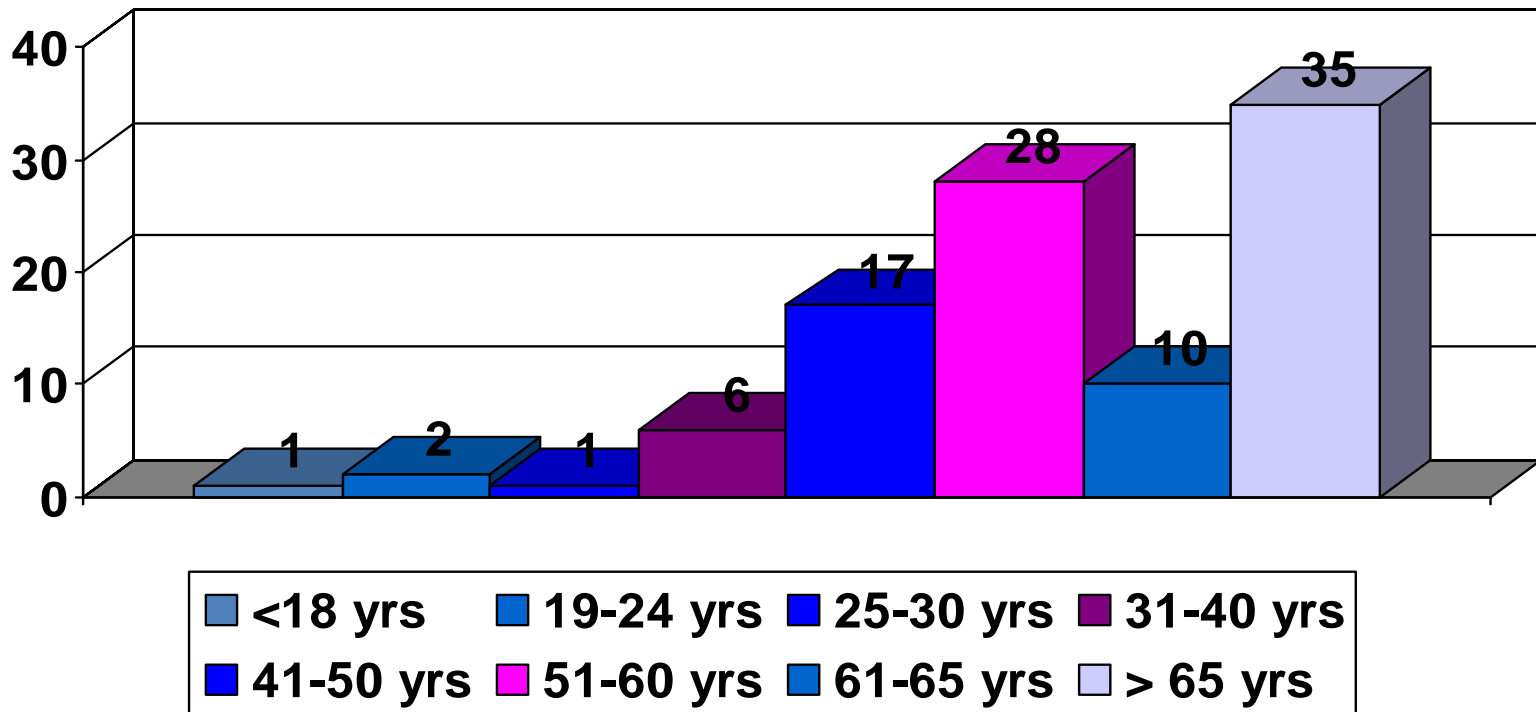
% of Respondents



# Baltimore City: 21215

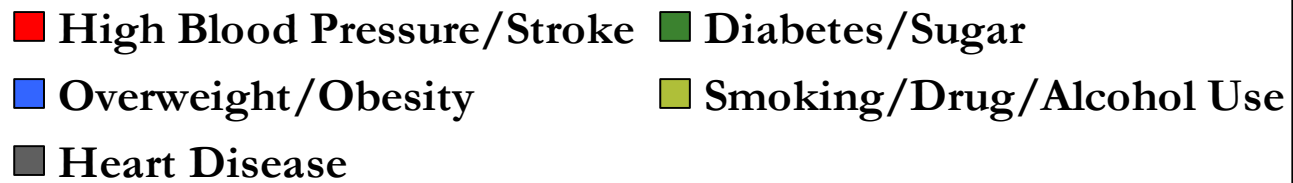
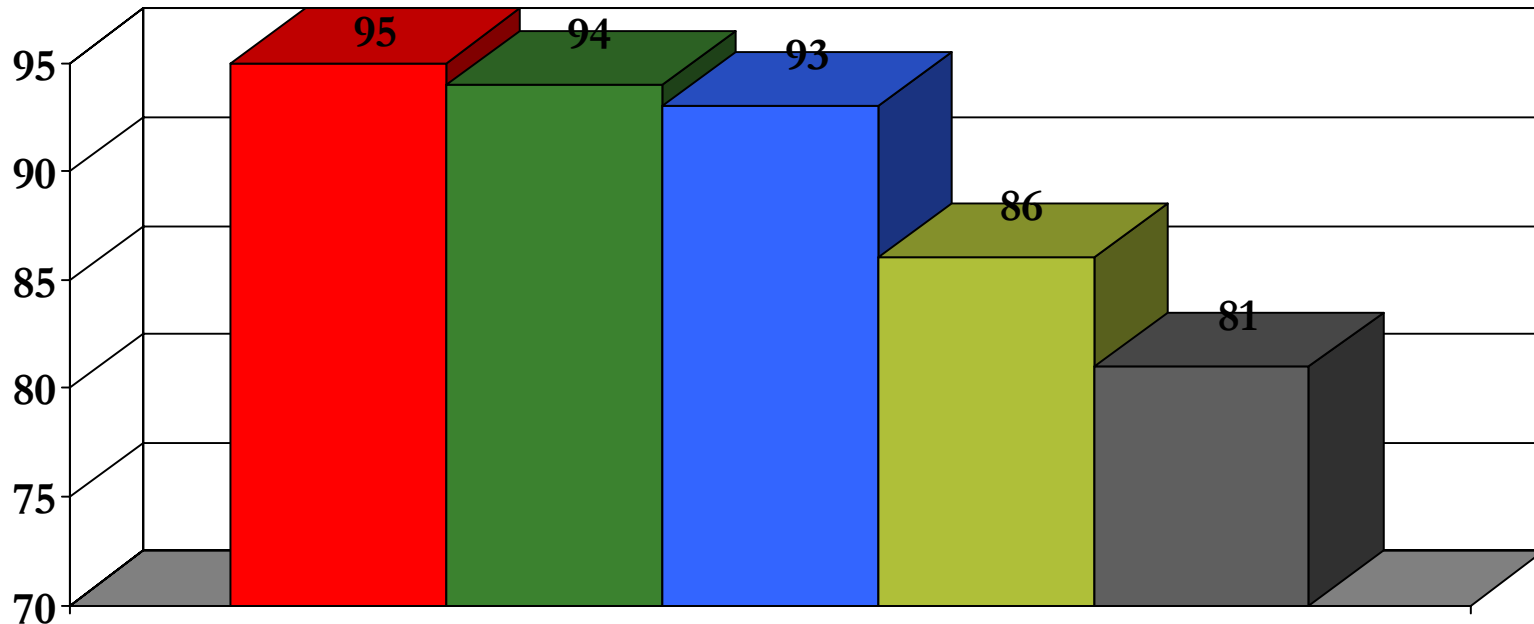
## Age Group Composition

% of Respondents



# Baltimore City: 21215

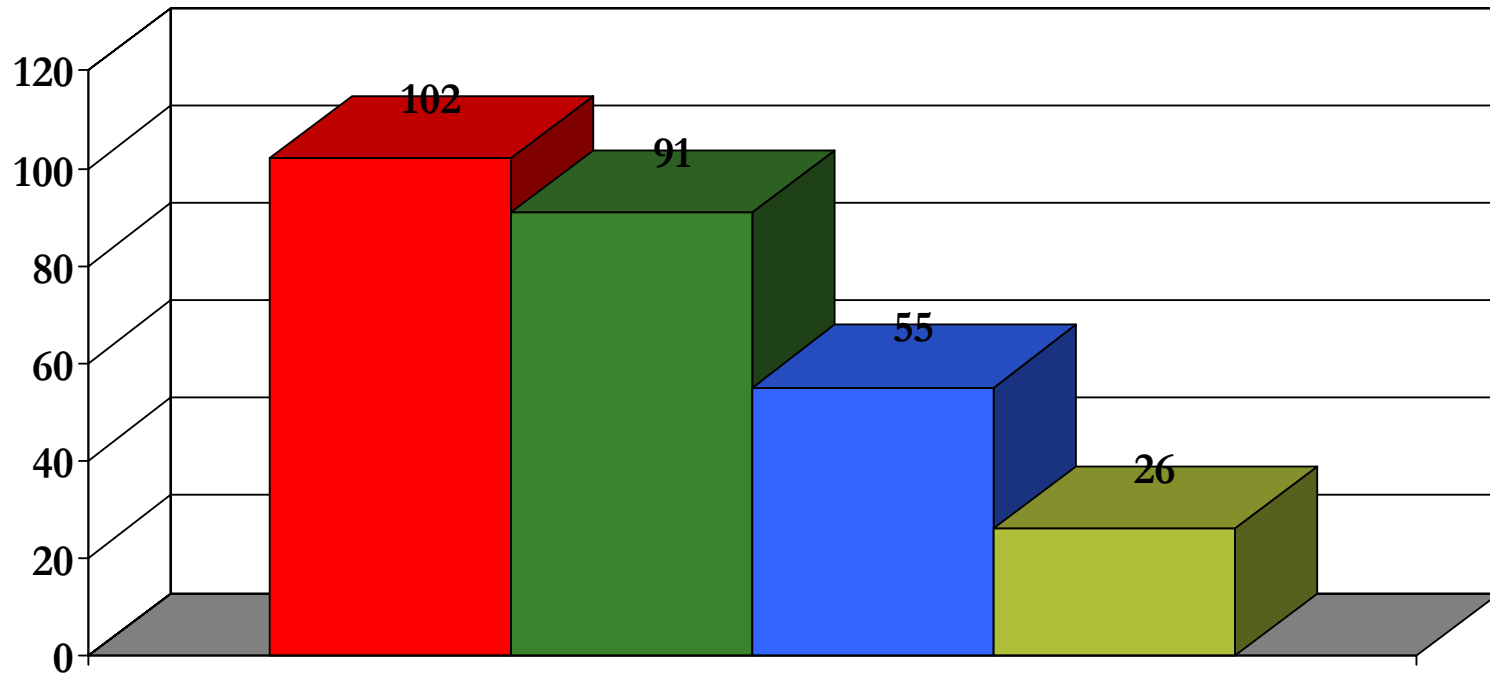
## Top 5 Health Concerns



# Baltimore City: 21215

## Top Barriers to Health Care

Frequency Selected

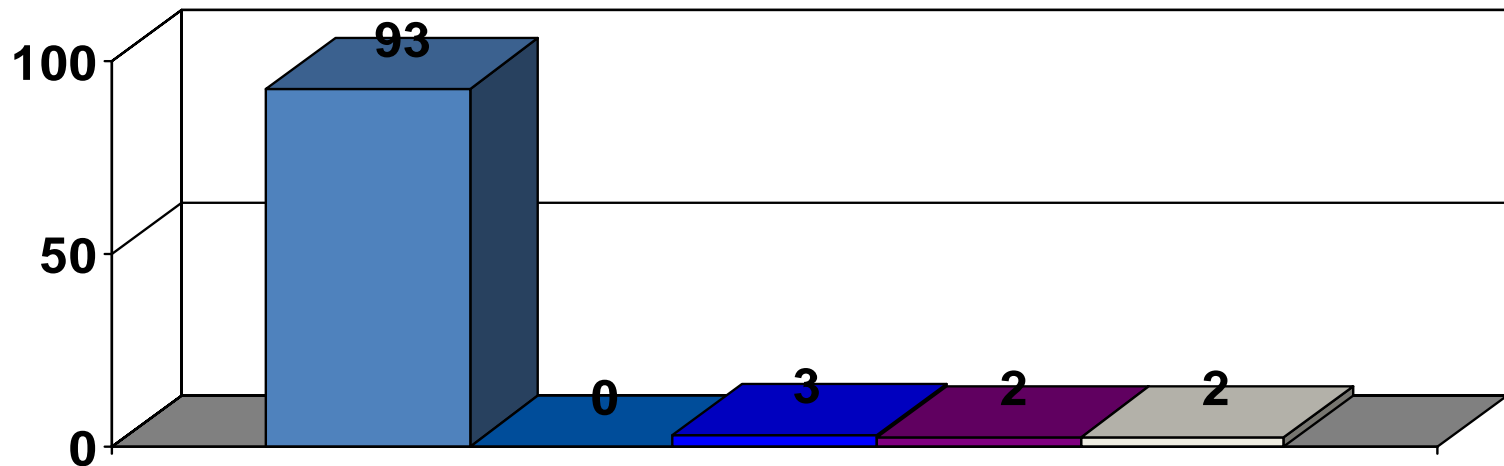


N = 130

# Baltimore City: 21216

## Racial Composition

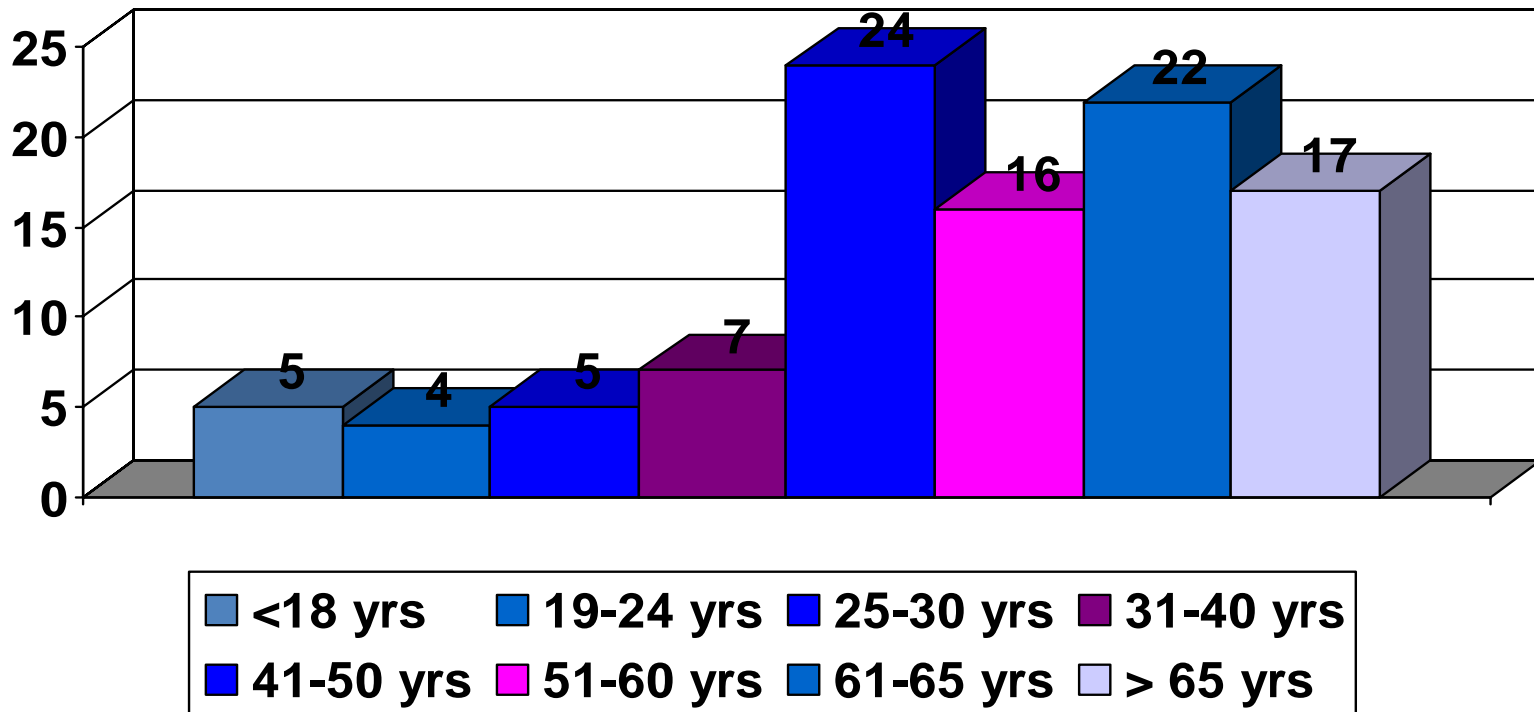
% of Respondents



# Baltimore City: 21216

## Age Group Composition

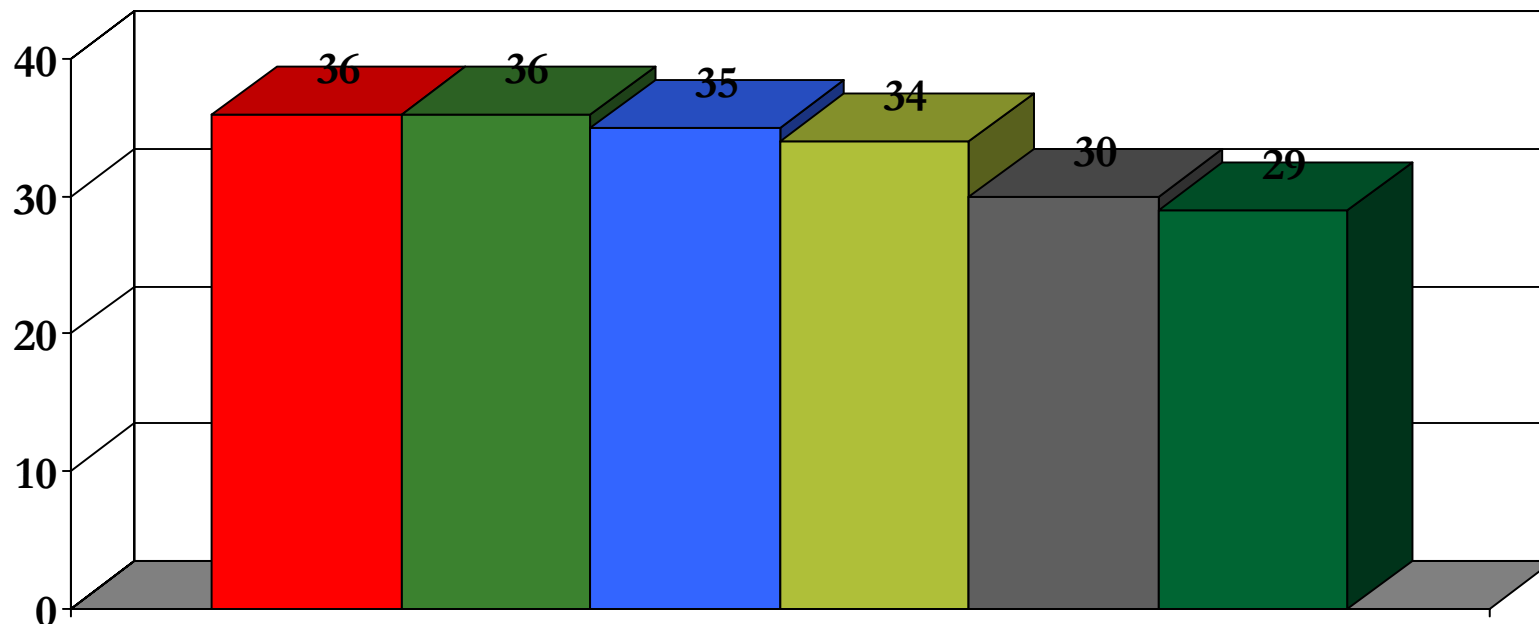
% of Respondents





# Baltimore City: 21216

## Top 6 Health Concerns



■ Diabetes/Sugar

■ Smoking/Drug/Alcohol Use

■ High Blood Pressure/Stroke

■ Overweight/Obesity

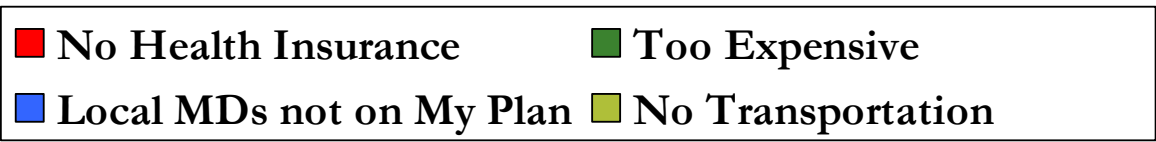
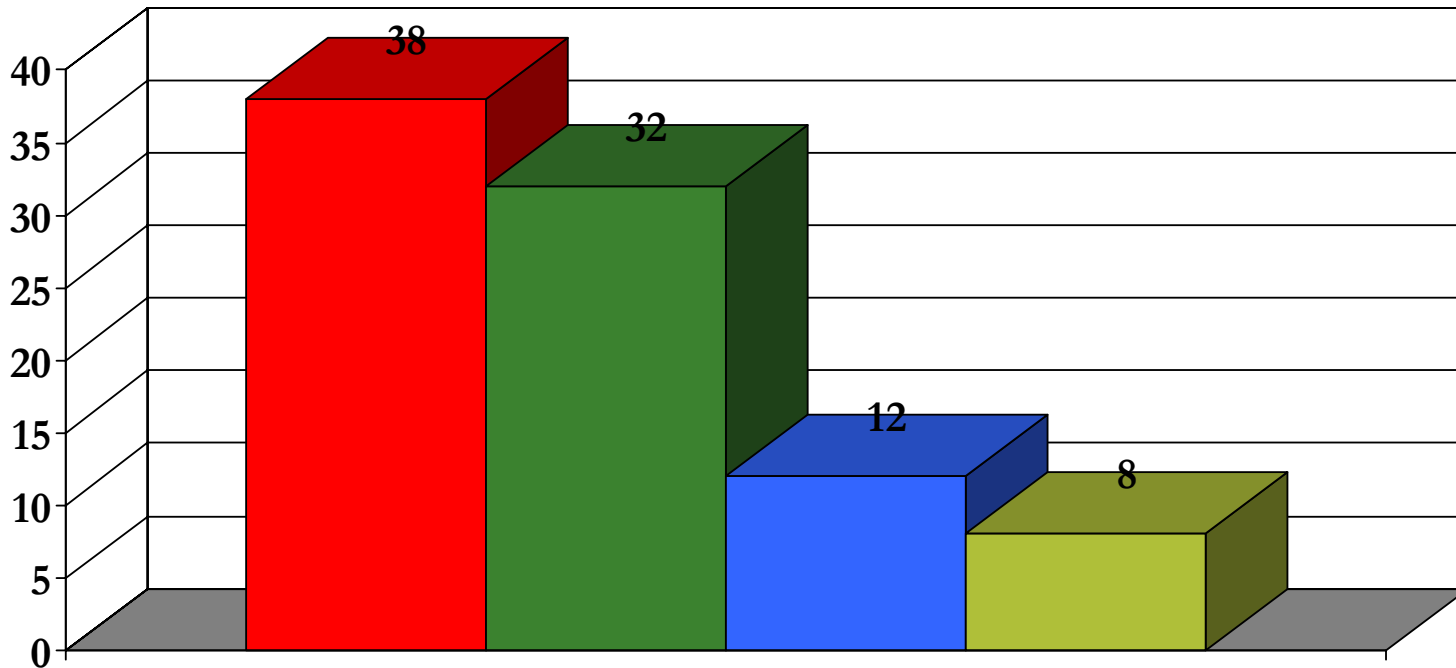
■ HIV/AIDS

■ Heart Disease

# Baltimore City: 21216

## Top Barriers to Health Care

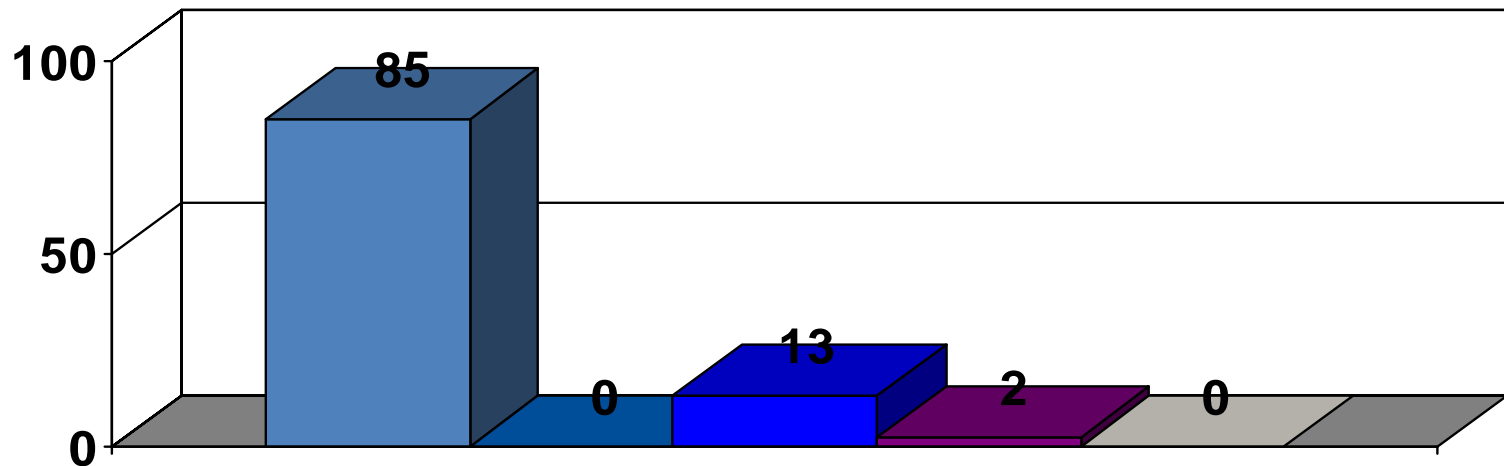
Frequency Selected



# Baltimore City: 21217

## Racial Composition

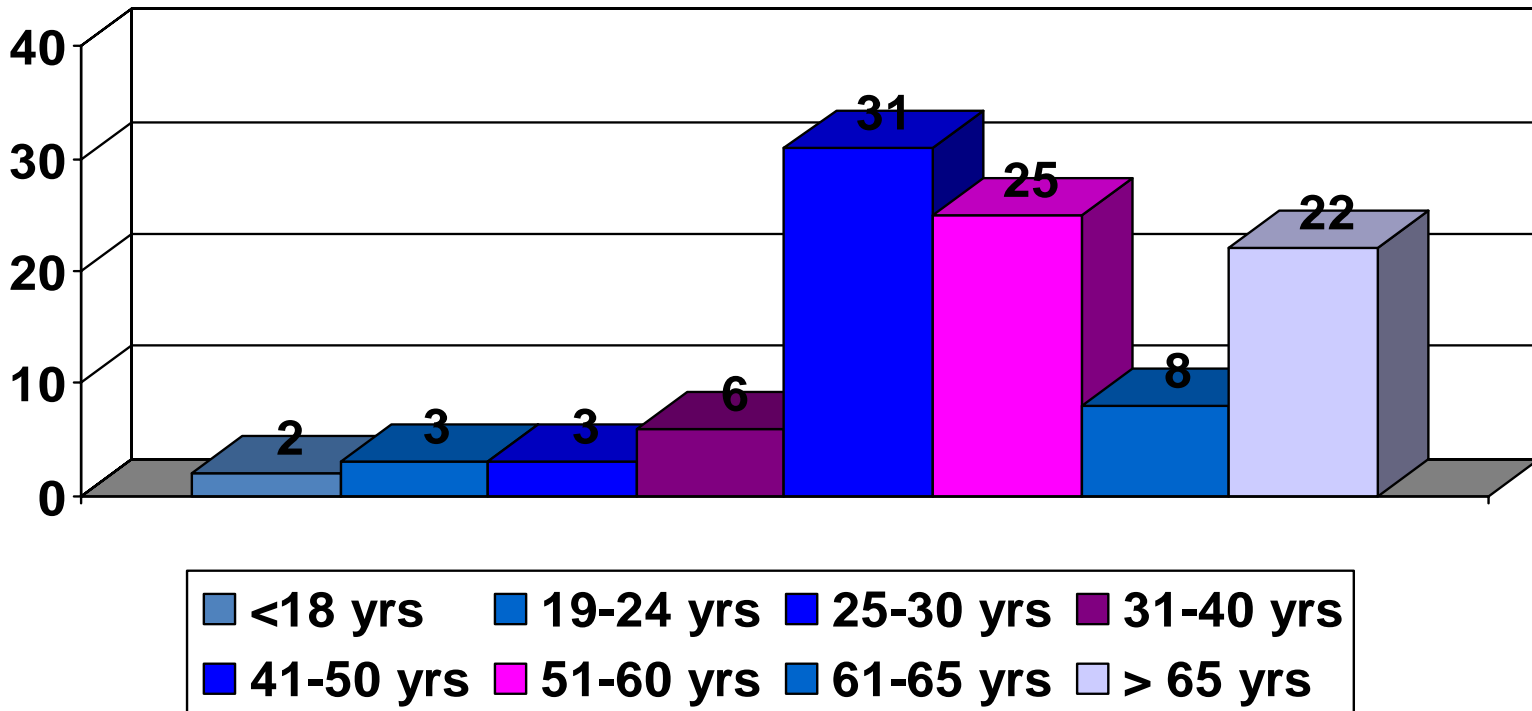
% of Respondents



# Baltimore City: 21217

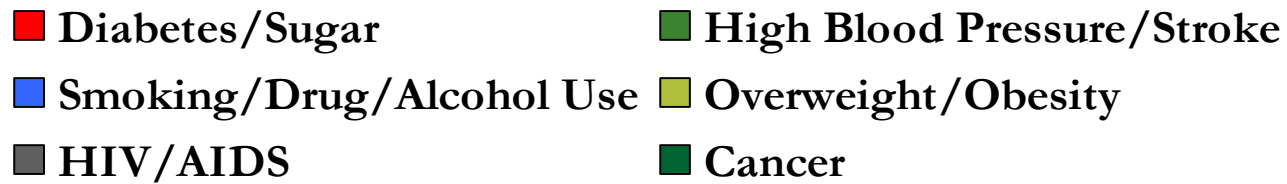
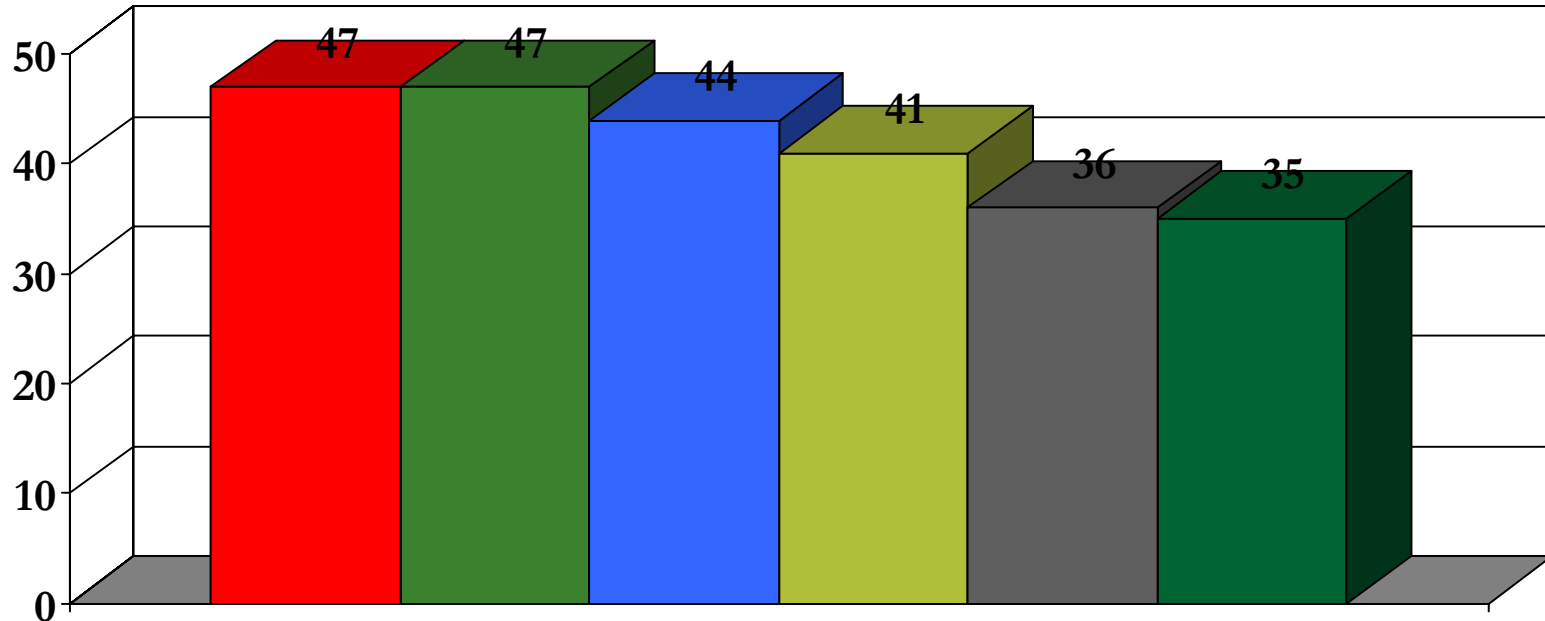
## Age Group Composition

% of Respondents



# Baltimore City: 21217

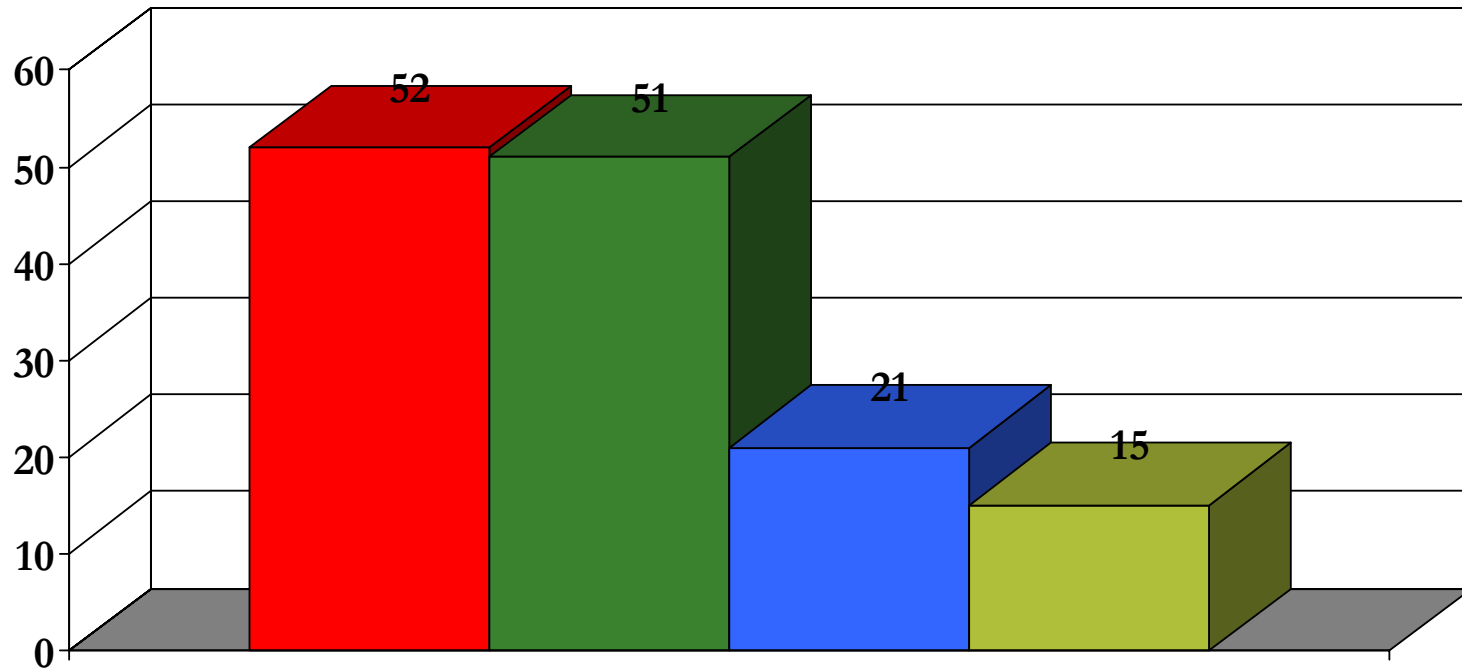
## Top 6 Health Concerns



# Baltimore City: 21217

## Top Barriers to Health Care

Frequency Selected



**No Health Insurance**

**Too Expensive**

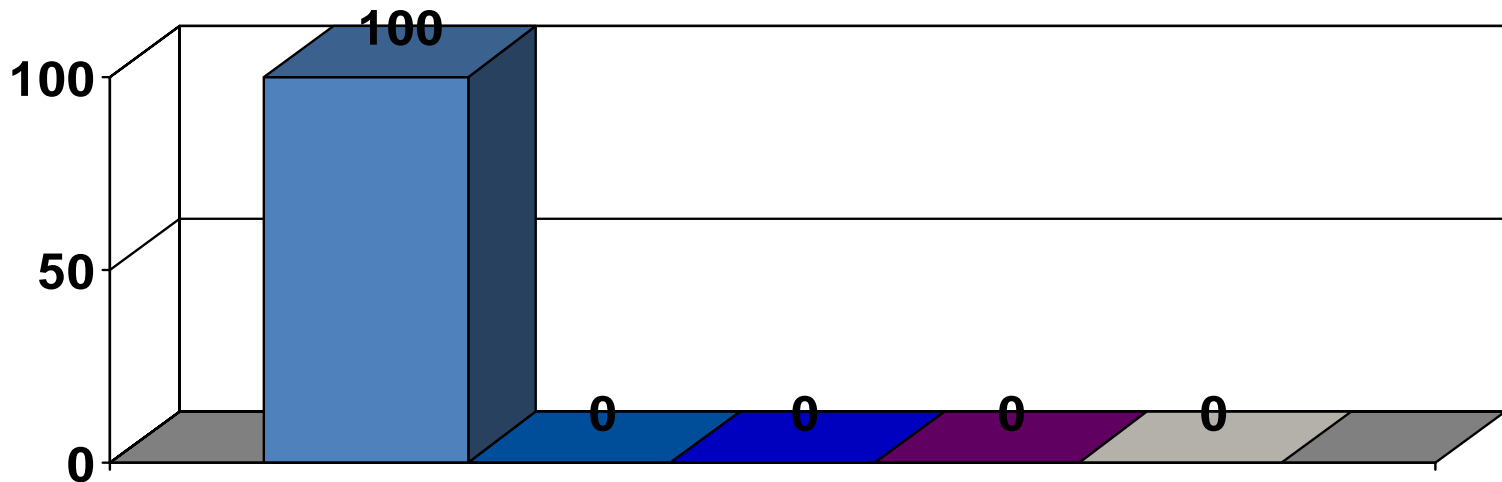
**No Transportation**

**Local MDs not on My Plan**

# Baltimore City: 21218

## Racial Composition

% of Respondents



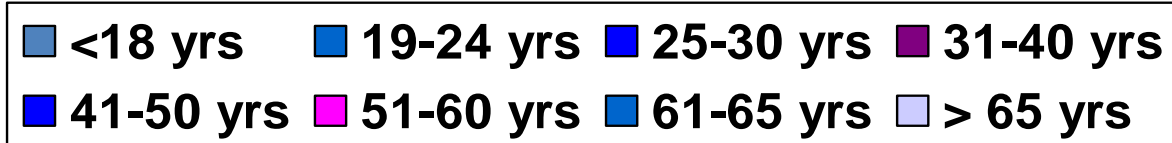
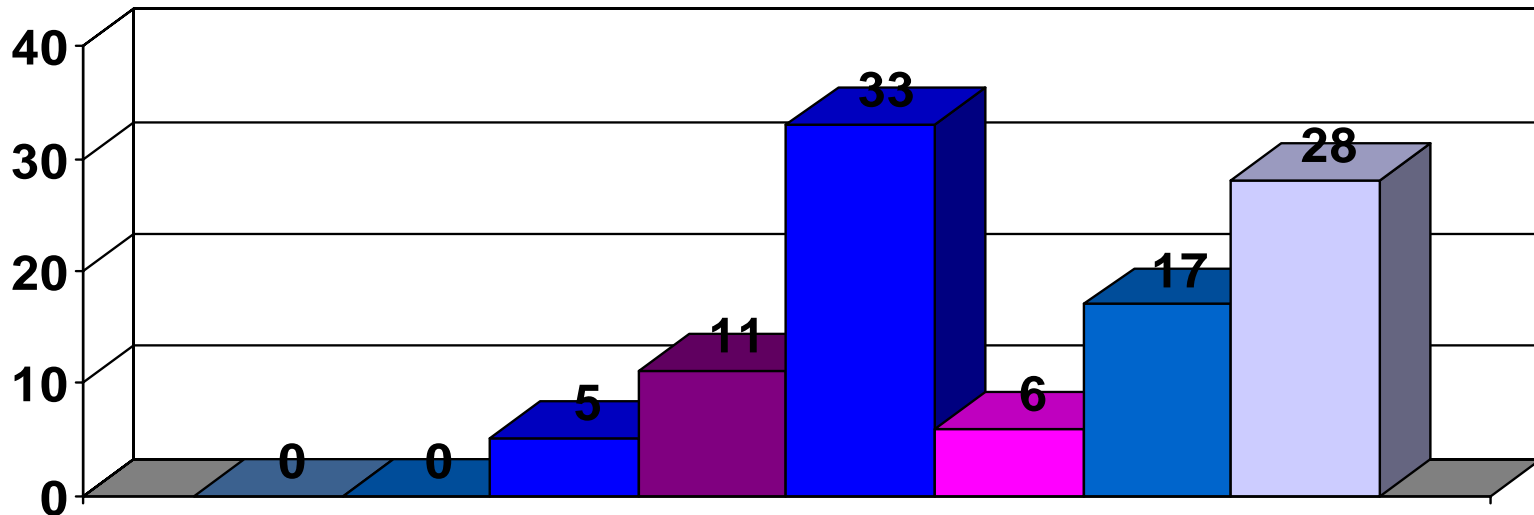
N = 18

Sample sizes <30 are not completely reliable

# Baltimore City: 21218

## Age Group Composition

% of Respondents



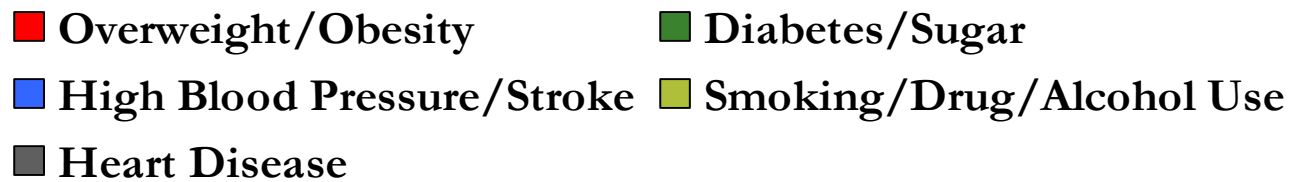
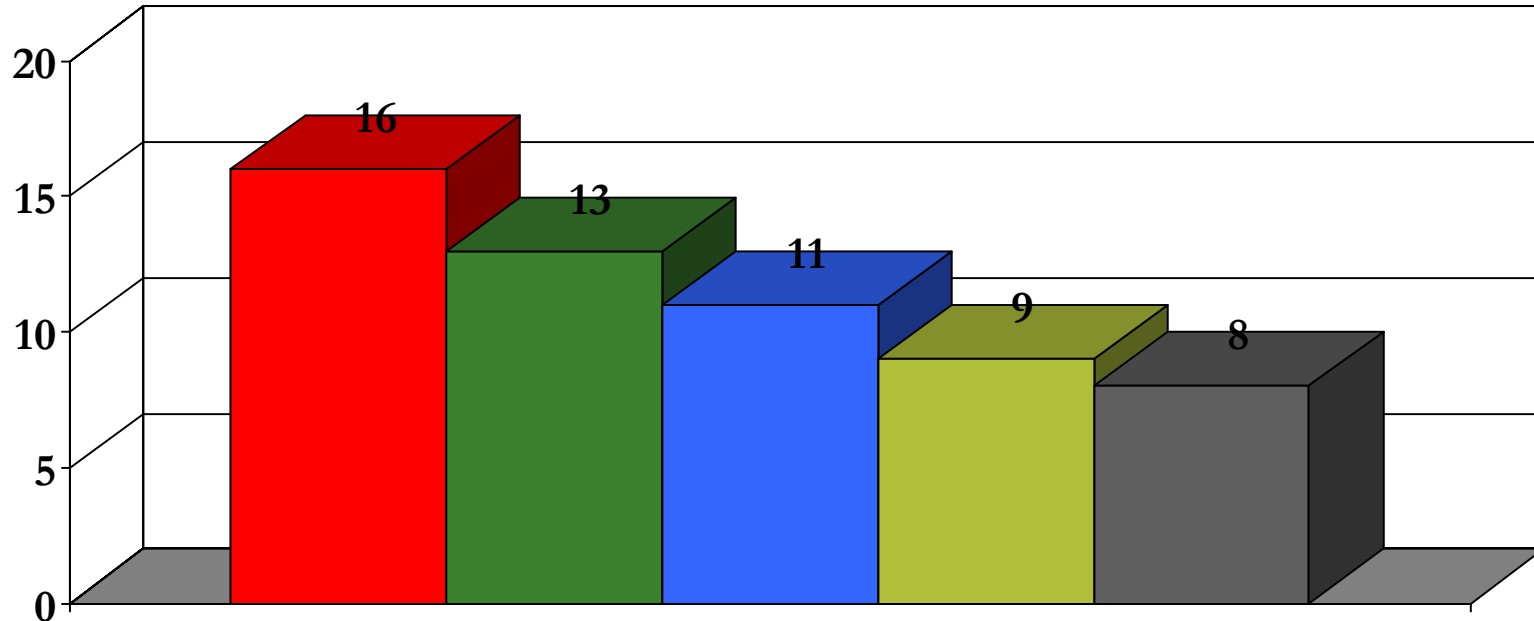
N = 18

Sample sizes <30 are not completely reliable



# Baltimore City: 21218

## Top 5 Health Concerns



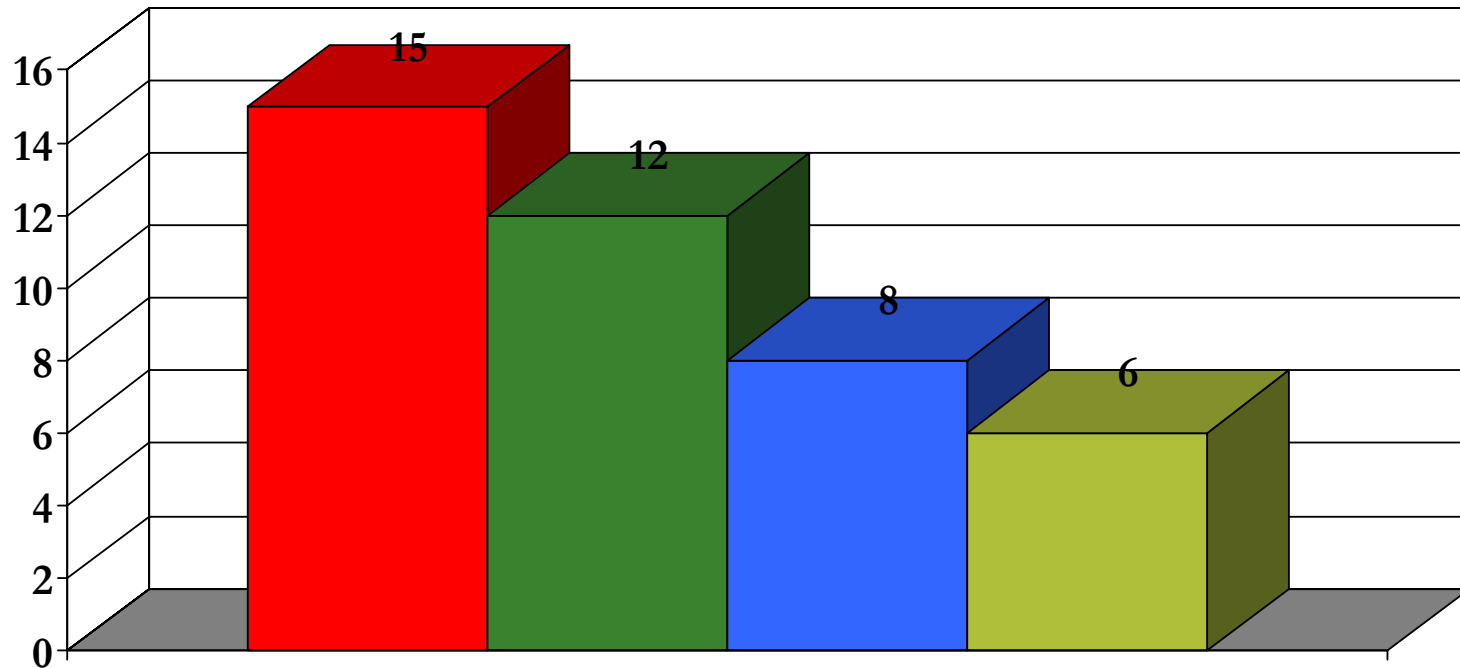
N = 18

Sample sizes <30 are not completely reliable

# Baltimore City: 21218

## Top Barriers to Health Care

Frequency Selected



**No Health Insurance**

**Too Expensive**

**No Transportation**

**Local MDs not on My Plan**

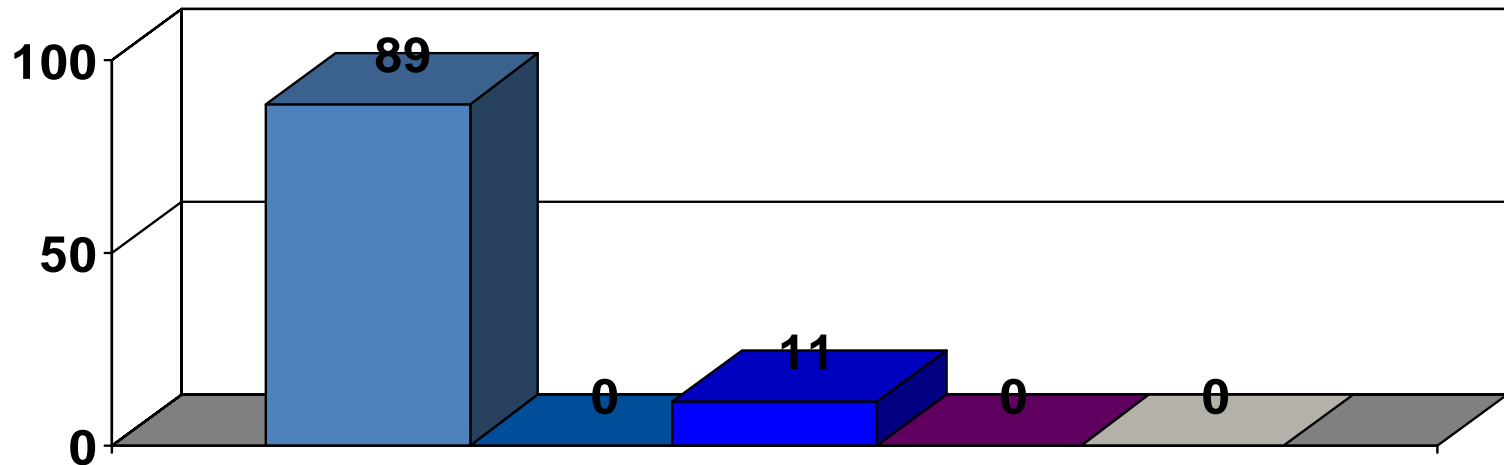
N = 18

Sample sizes <30 are not completely reliable

# Baltimore City: 21223

## Racial Composition

% of Respondents



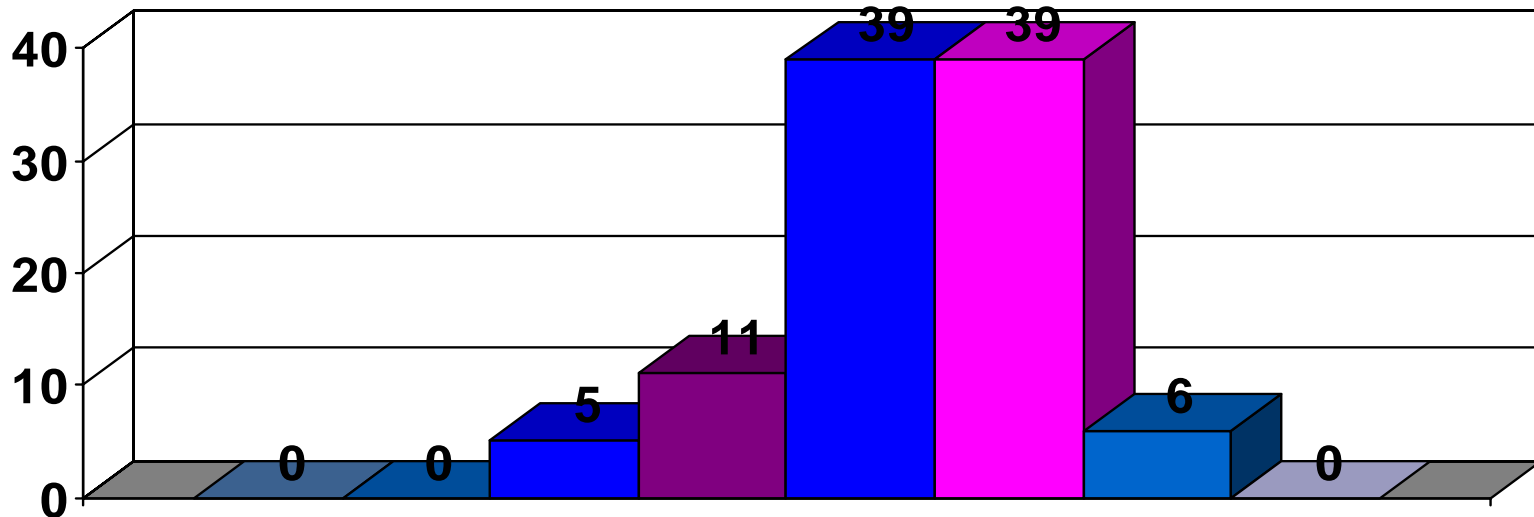
N = 18

Sample sizes <30 are not completely reliable

# Baltimore City: 21223

## Age Group Composition

% of Respondents

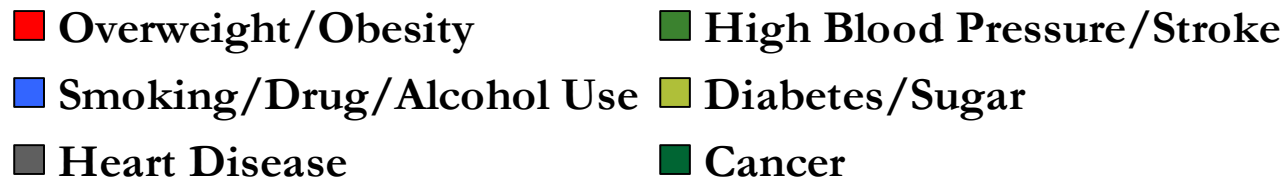
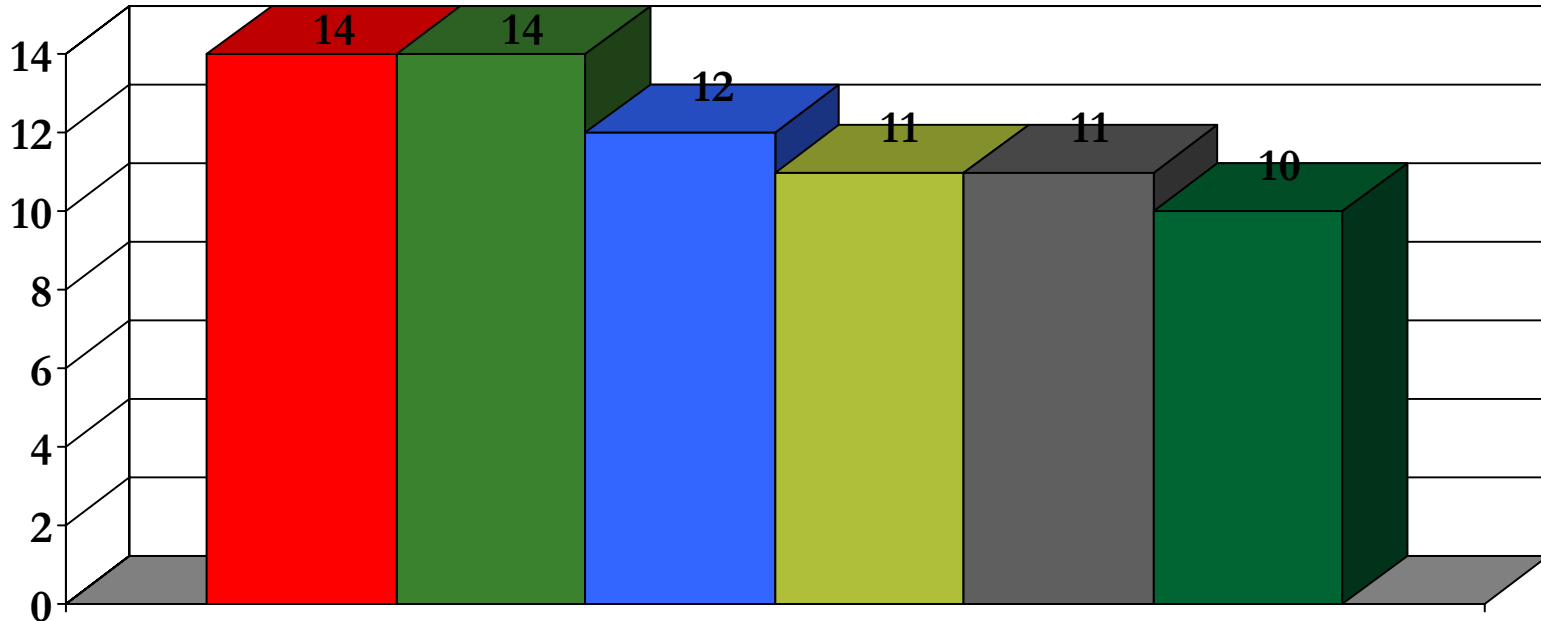


N = 18

Sample sizes <30 are not completely reliable

# Baltimore City: 21223

## Top 6 Health Concerns



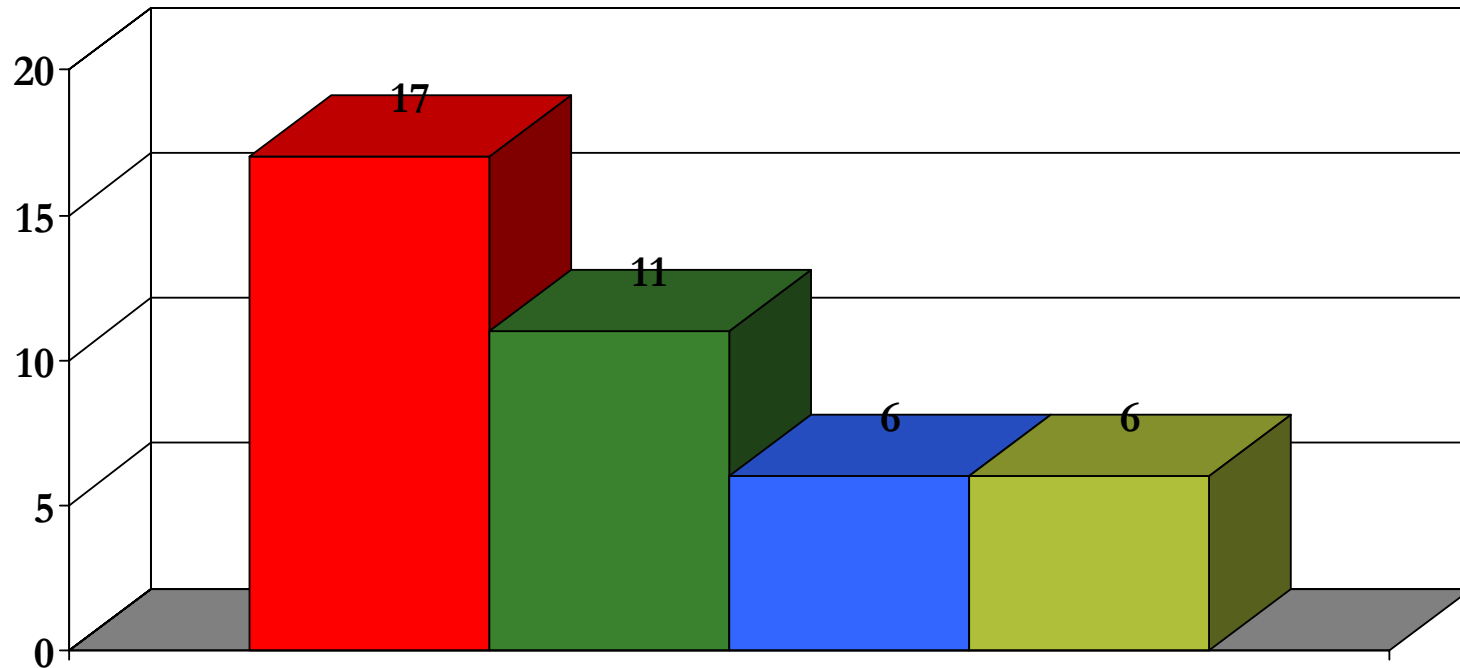
N = 18

Sample sizes <30 are not completely reliable

# Baltimore City: 21223

## Top Barriers to Health Care

Frequency Selected



**No Health Insurance**

**Too Expensive**

**No Transportation**

**Local MDs not on My Plan**

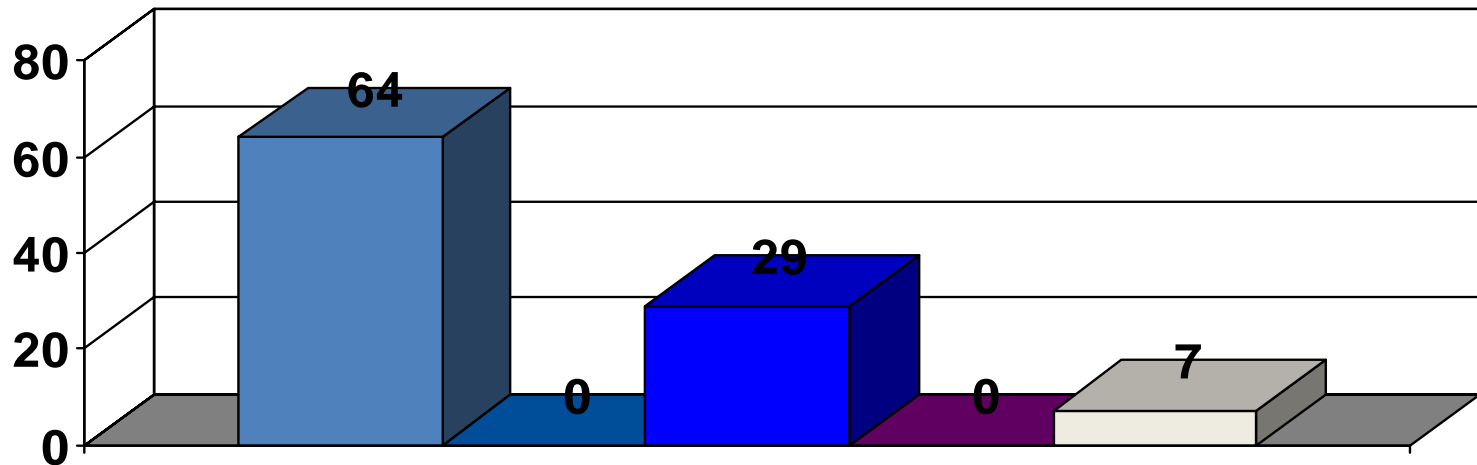
N = 18

Sample sizes <30 are not completely reliable

# Baltimore City: 21225

## Racial Composition

% of Respondents



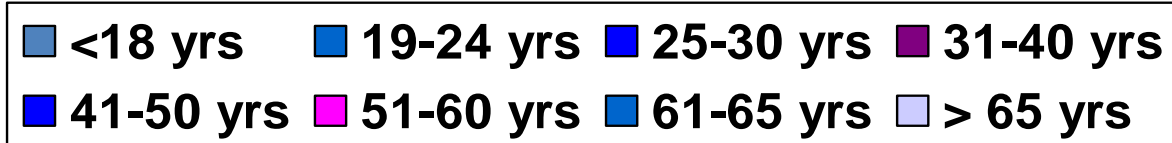
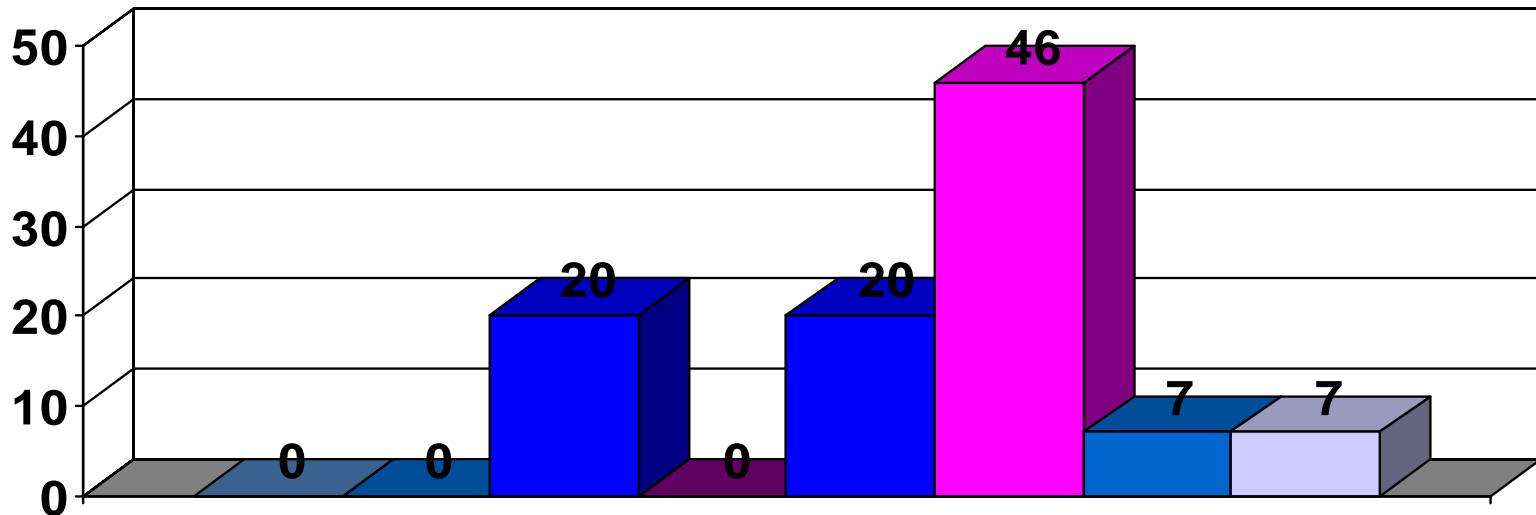
N = 15

Sample sizes <30 are not completely reliable

# Baltimore City: 21225

## Age Group Composition

% of Respondents



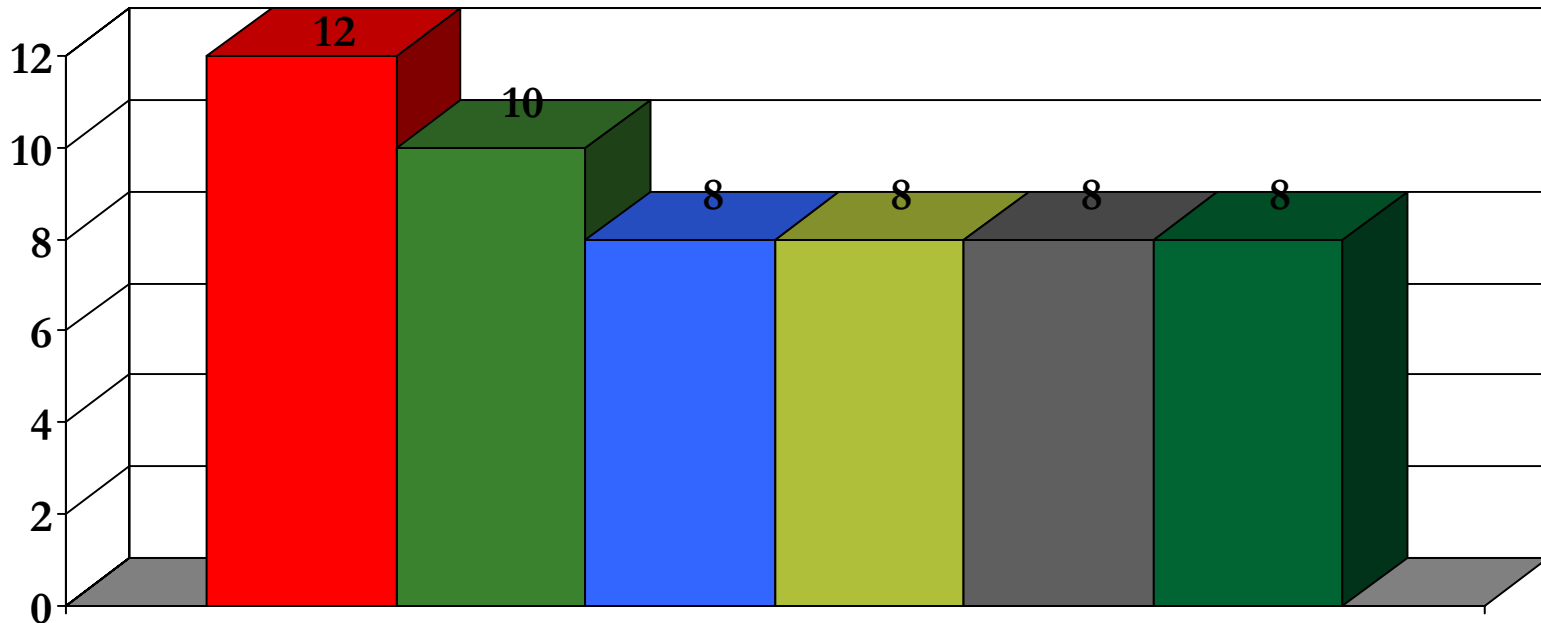
N = 15

Sample sizes <30 are not completely reliable



# Baltimore City: 21225

## Top 6 Health Concerns



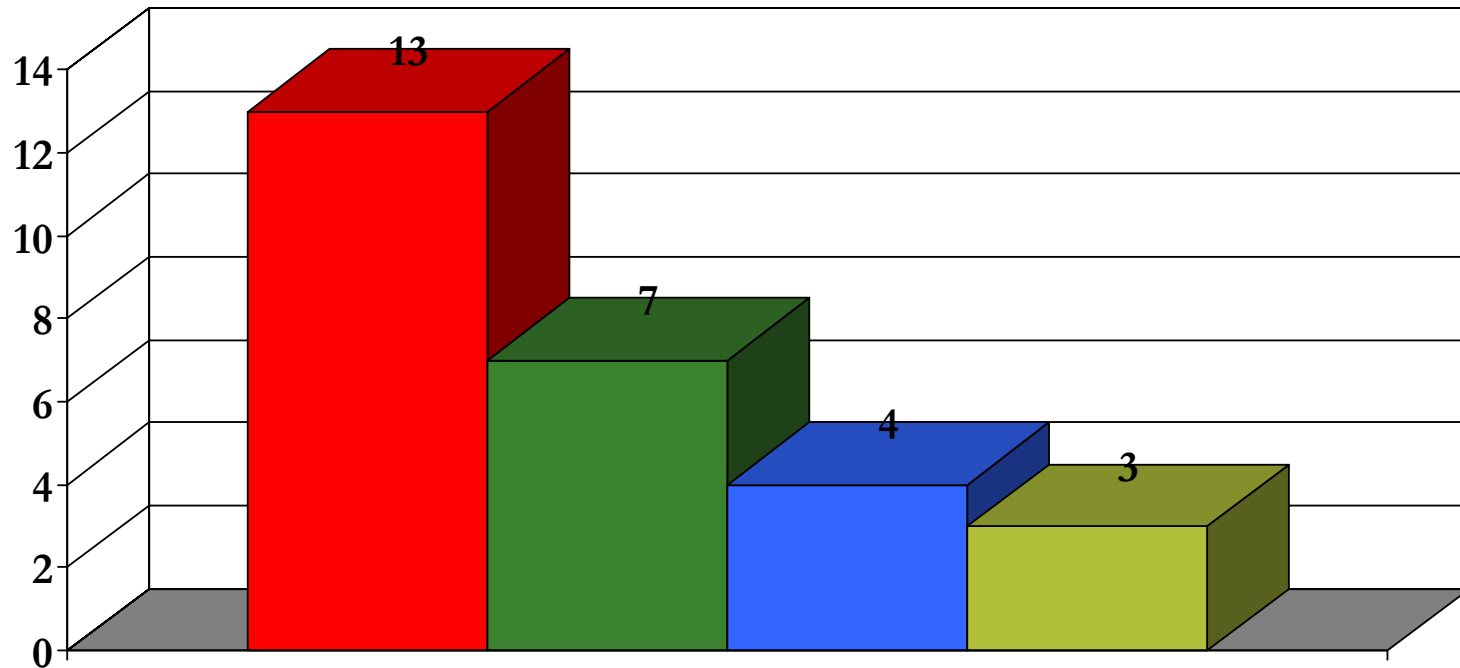
N = 15

Sample sizes <30 are not completely reliable

# Baltimore City: 21225

## Top Barriers to Health Care

Frequency Selected



- |  |   |
|--|---|
| <span style="color: red;">■</span> No Health Insurance | <span style="color: green;">■</span> Too Expensive        |
| <span style="color: blue;">■</span> No Transportation  | <span style="color: olive;">■</span> MD Too Far from Home |

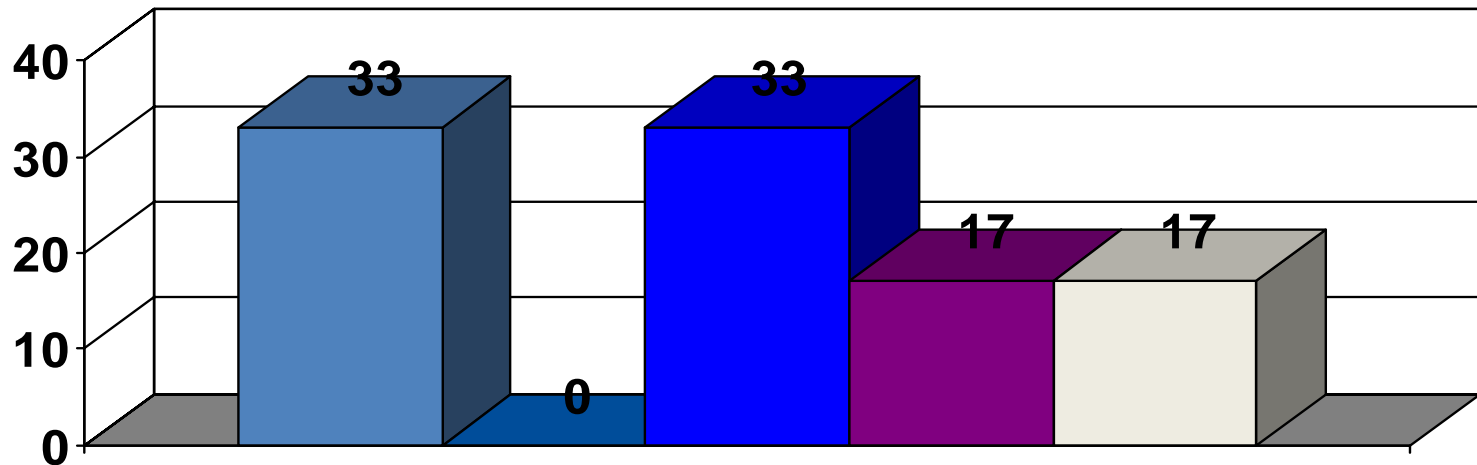
N = 15

Sample sizes <30 are not completely reliable

# Baltimore City: 21227

## Racial Composition

% of Respondents



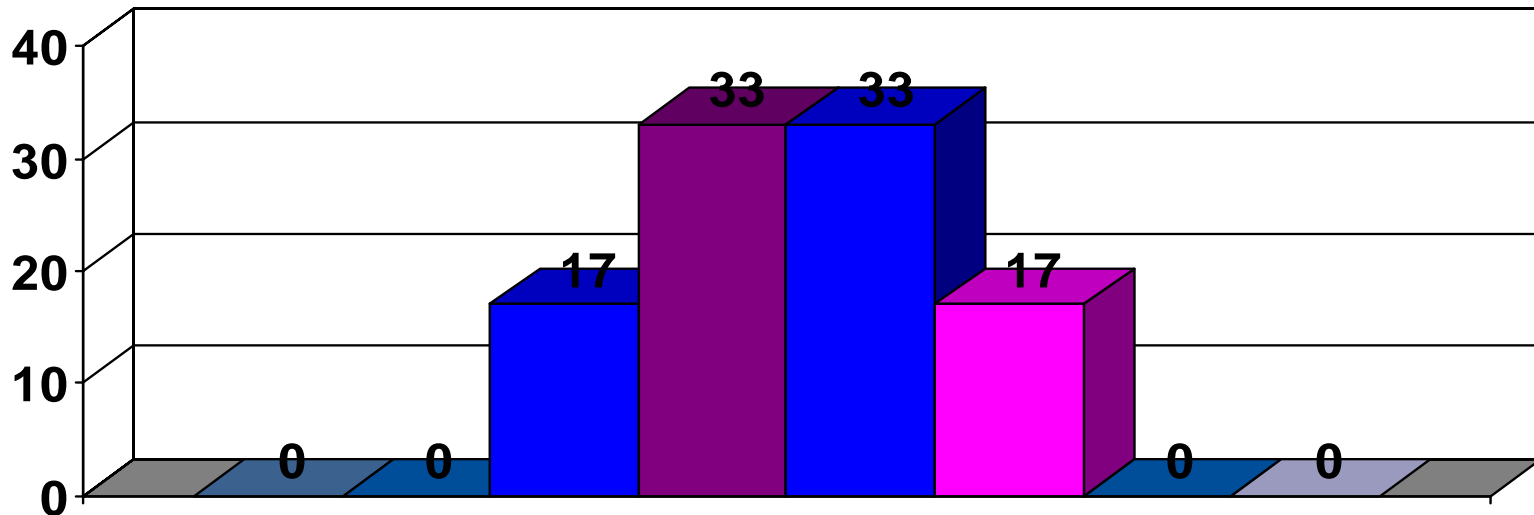
N = 6

Sample sizes <30 are not completely reliable

# Baltimore City: 21227

## Age Group Composition

% of Respondents

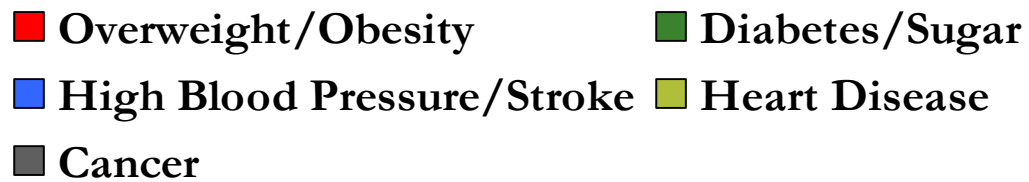
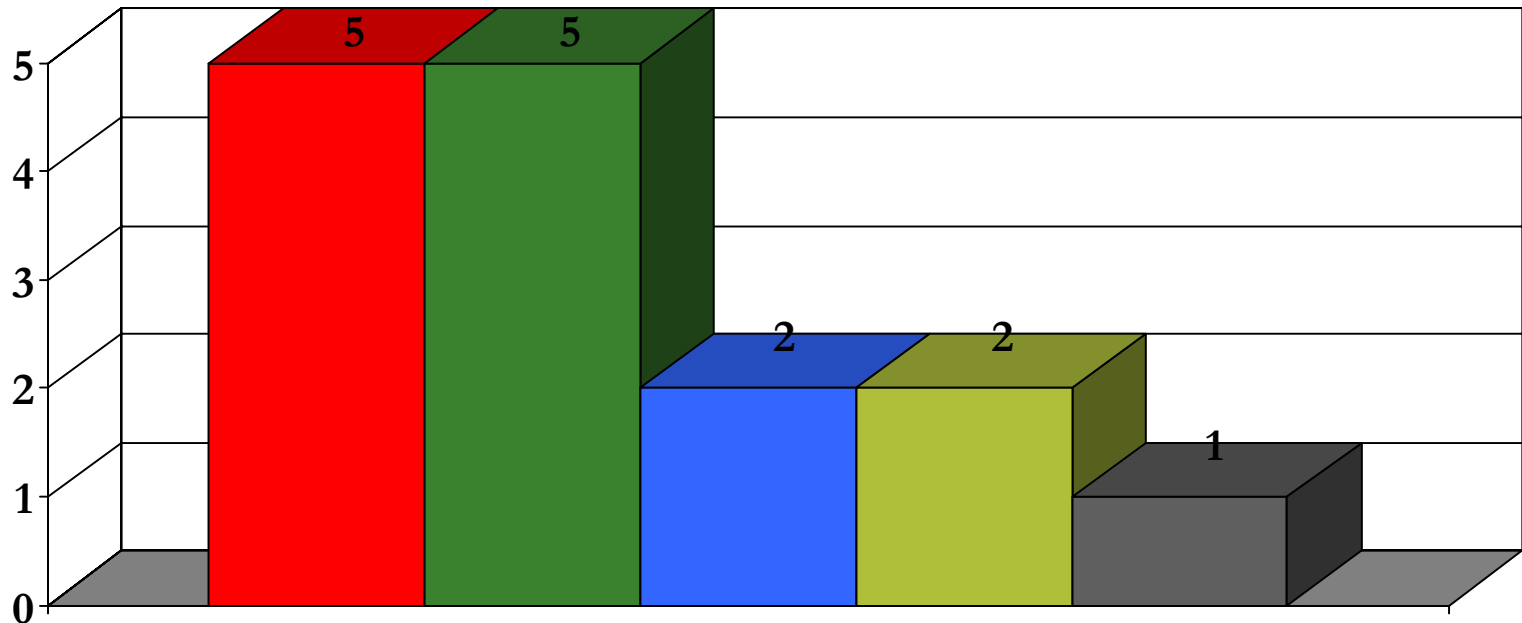


N = 6

Sample sizes <30 are not completely reliable

# Baltimore City: 21227

## Top 6 Health Concerns



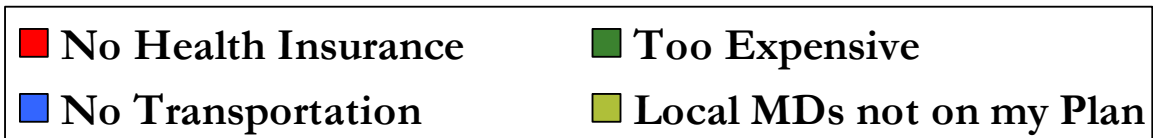
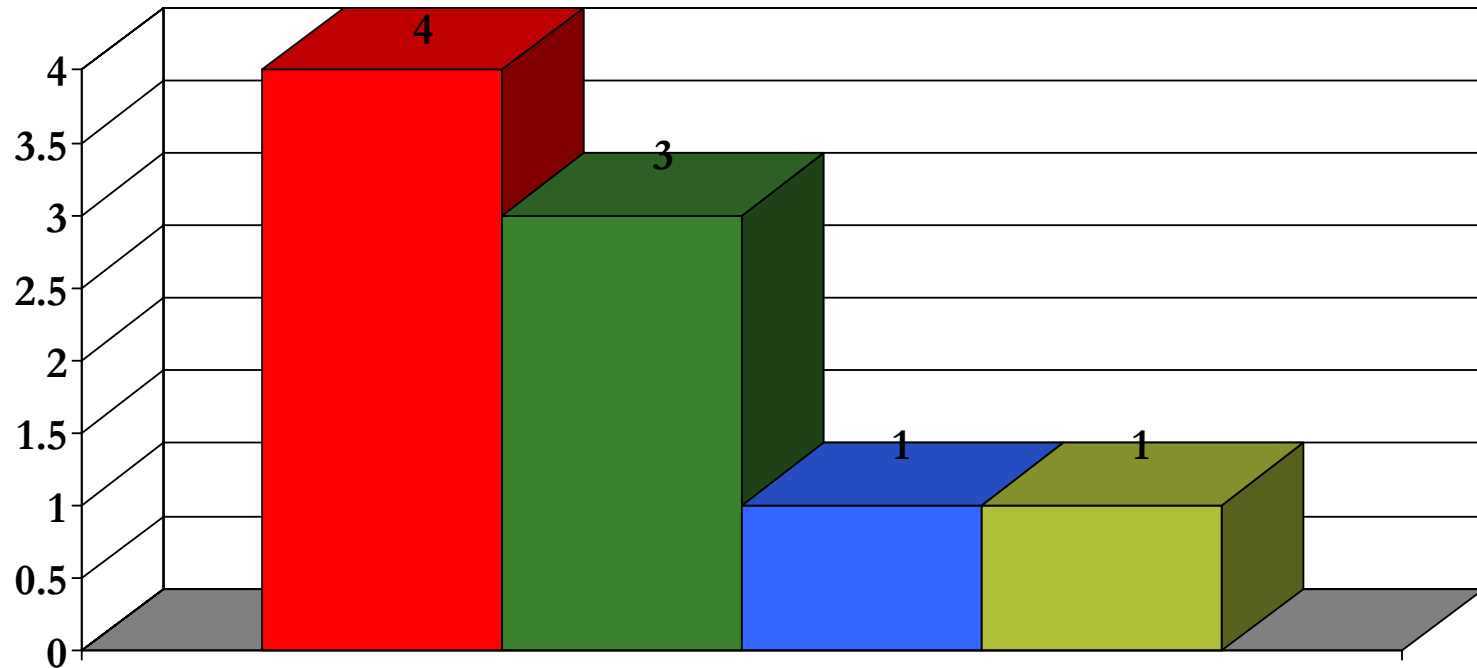
N = 6

Sample sizes <30 are not completely reliable

# Baltimore City: 21227

## Top Barriers to Health Care

Frequency Selected



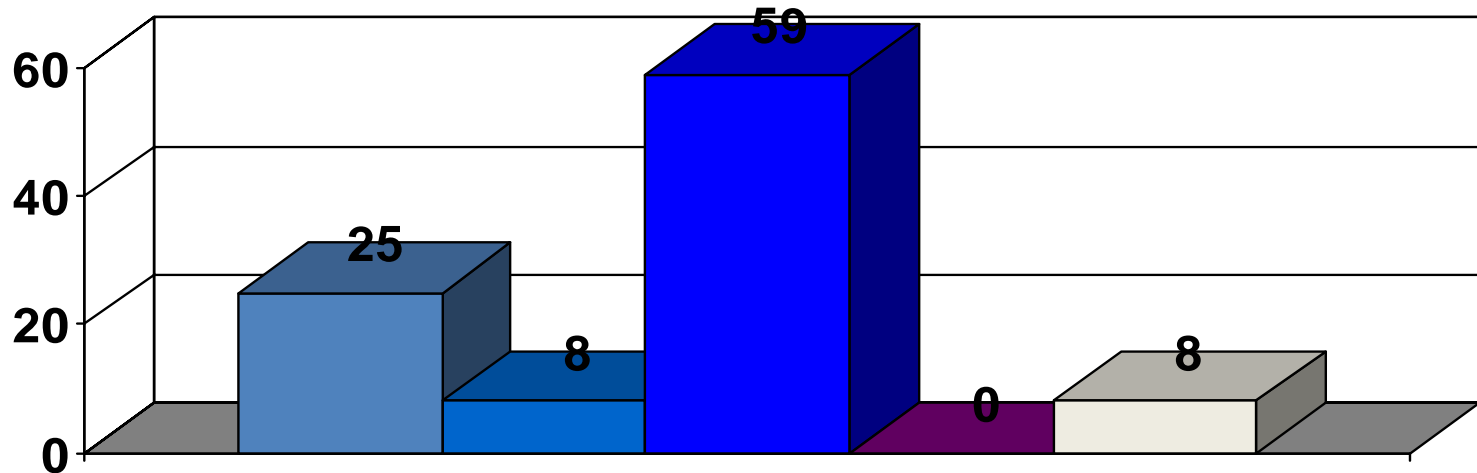
N = 6

Sample sizes <30 are not completely reliable

# Baltimore City: 21228

## Racial Composition

% of Respondents



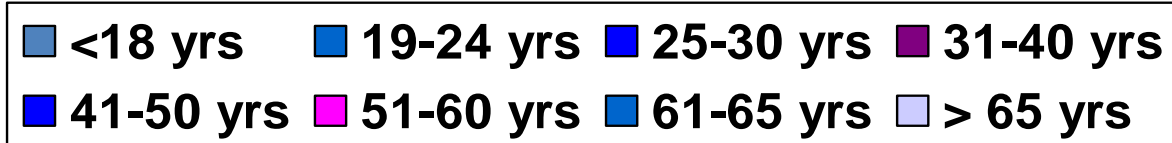
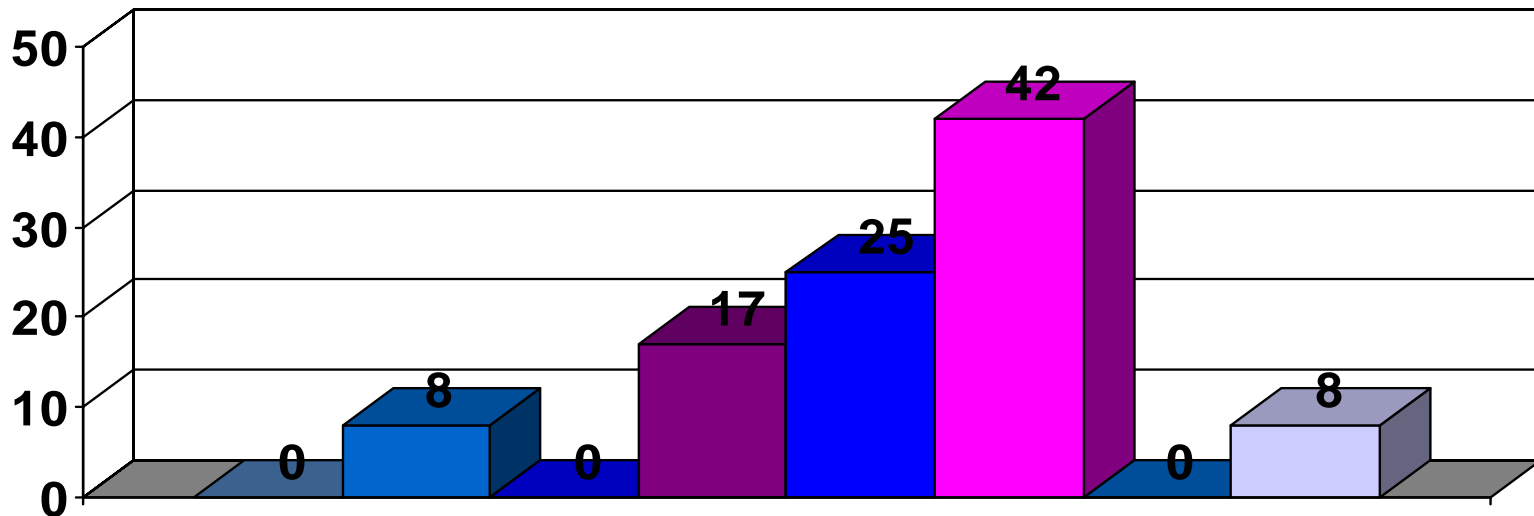
N = 12

Sample sizes <30 are not completely reliable

# Baltimore City: 21228

## Age Group Composition

% of Respondents



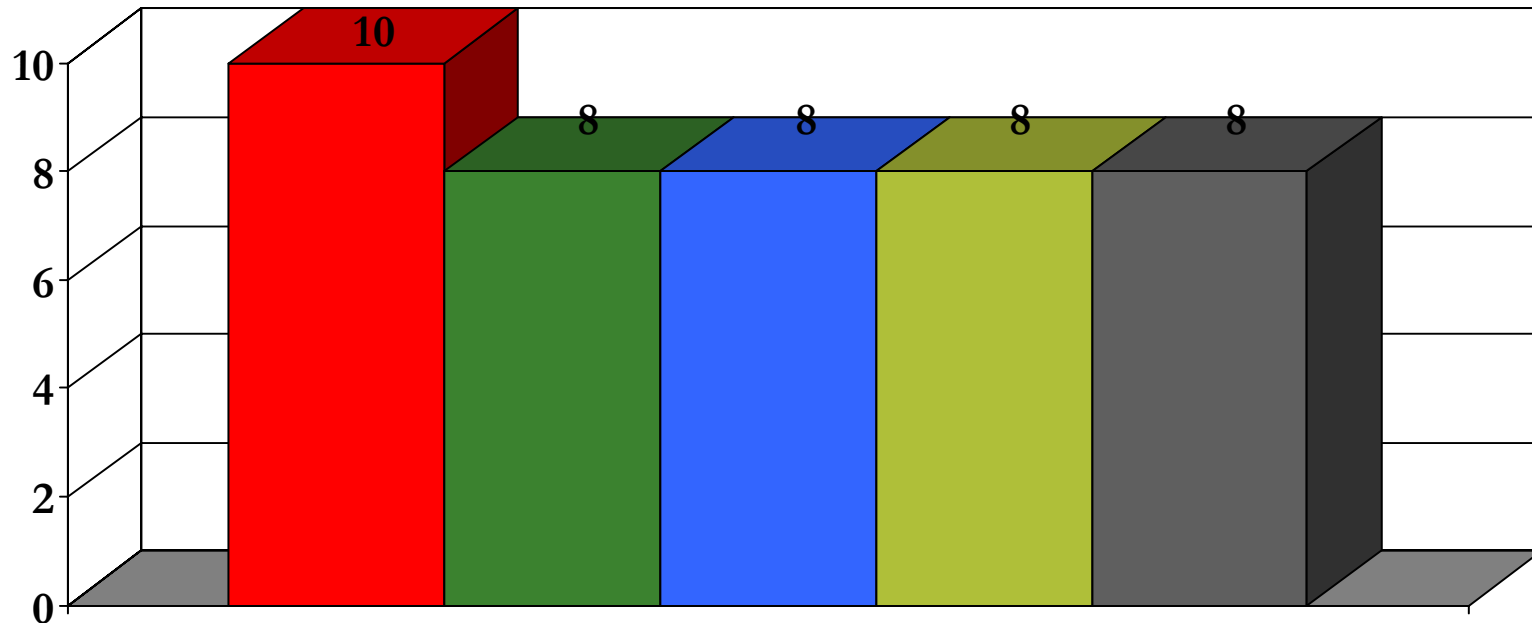
N = 12

Sample sizes <30 are not completely reliable



# Baltimore City: 21228

## Top 5 Health Concerns



- Smoking/Drug/Alcohol Use
- Diabetes/Sugar
- Overweight/Obesity
- Mental Health Issues
- Heart Disease

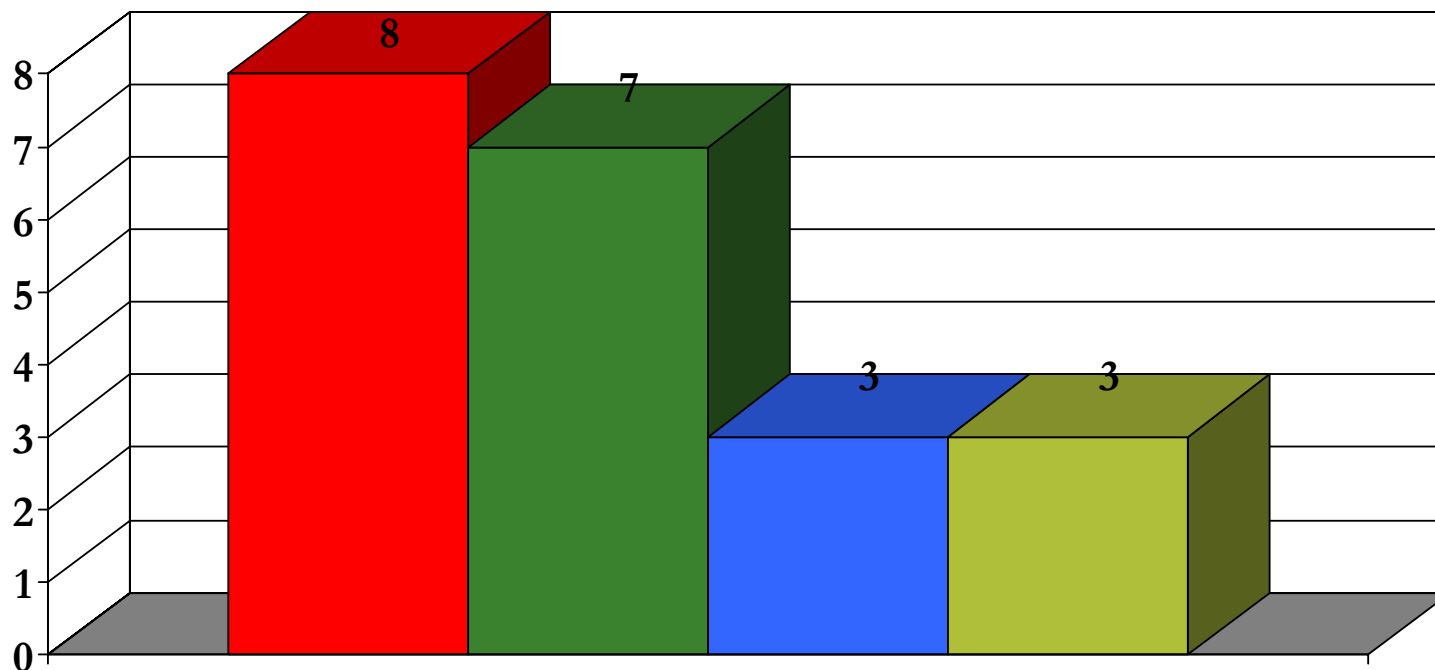
N = 12

Sample sizes <30 are not completely reliable

# Baltimore City: 21228

## Top Barriers to Health Care

Frequency Selected



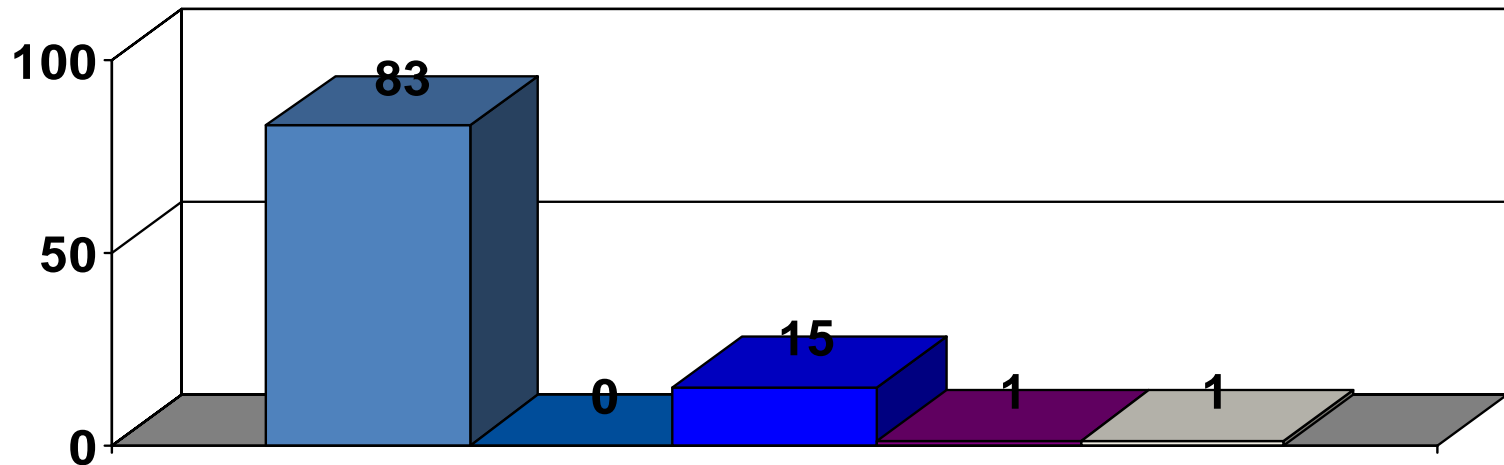
N = 12

Sample sizes <30 are not completely reliable

# Baltimore City: 21229

## Racial Composition

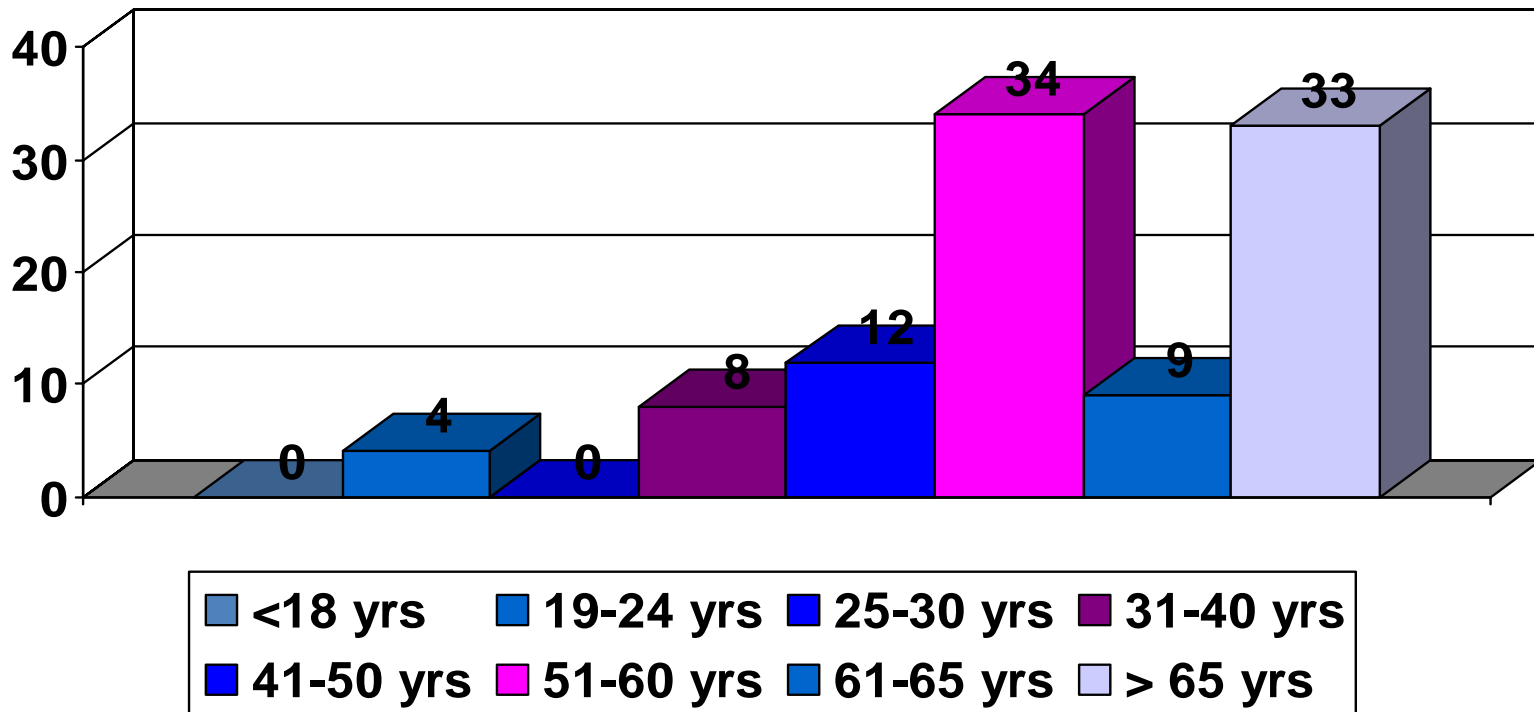
% of Respondents



# Baltimore City: 21229

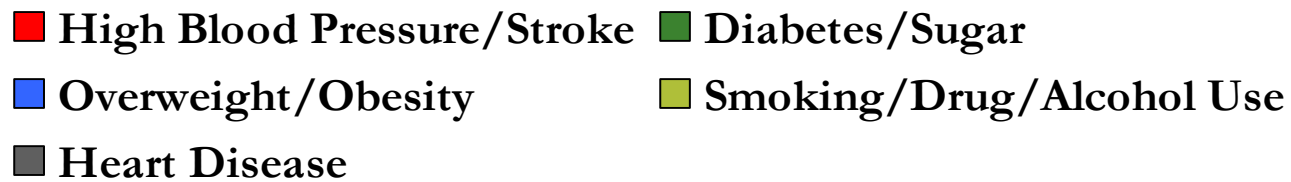
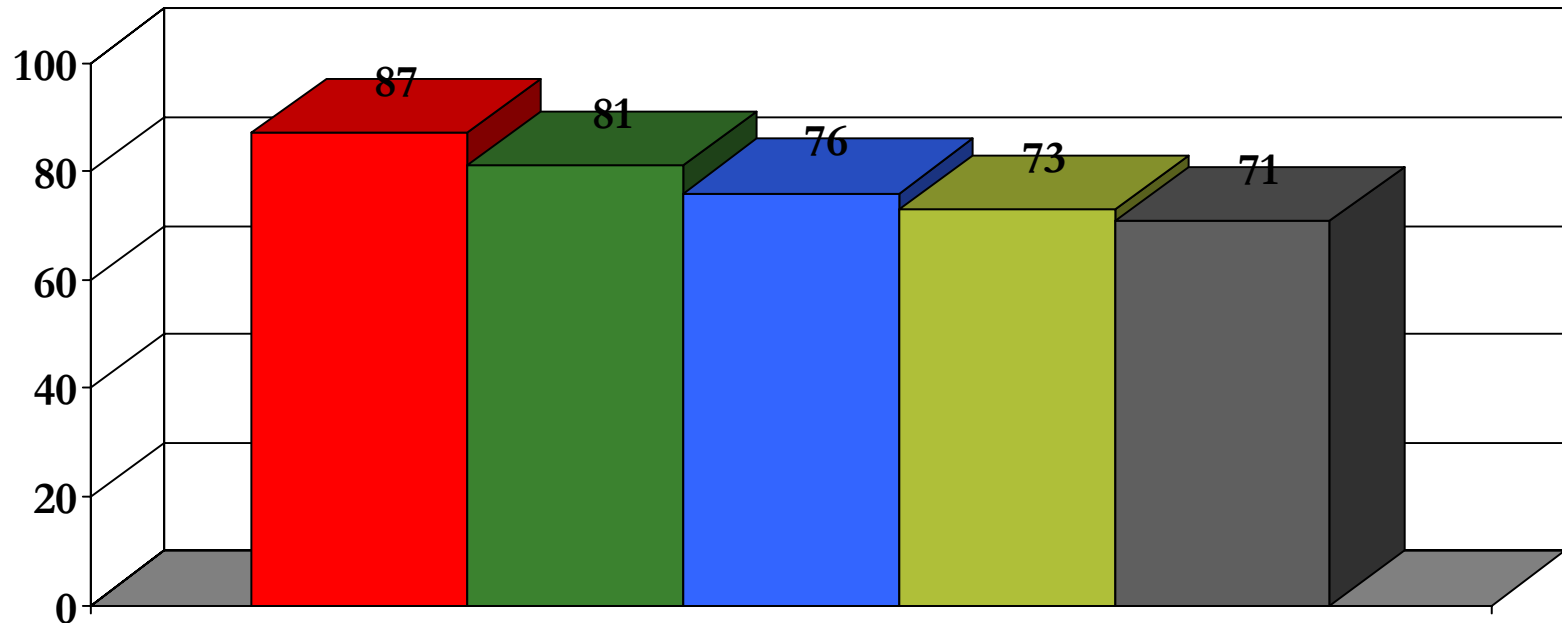
## Age Group Composition

% of Respondents



# Baltimore City: 21229

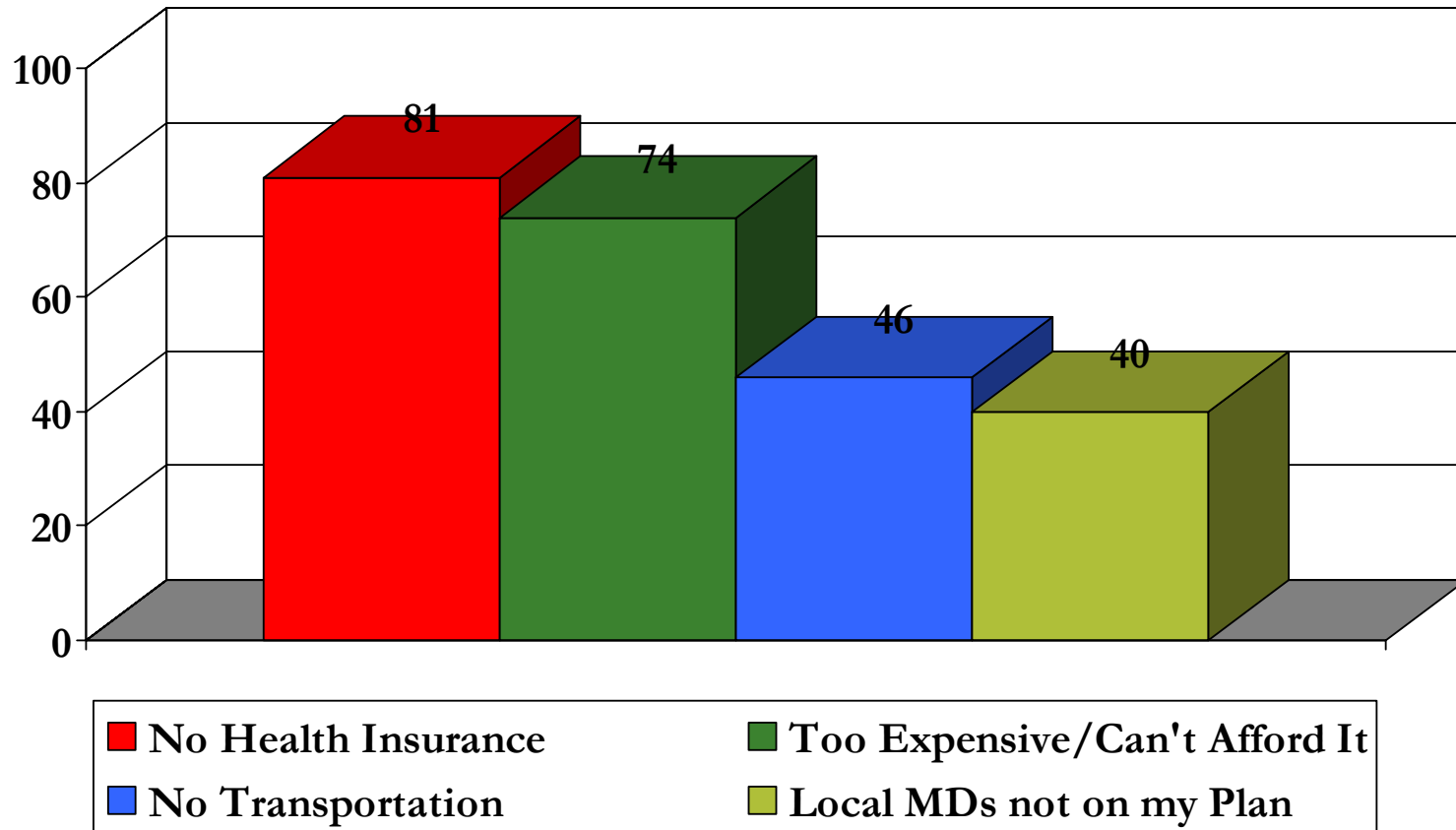
## Top 5 Health Concerns



# Baltimore City: 21229

## Top Barriers to Health Care

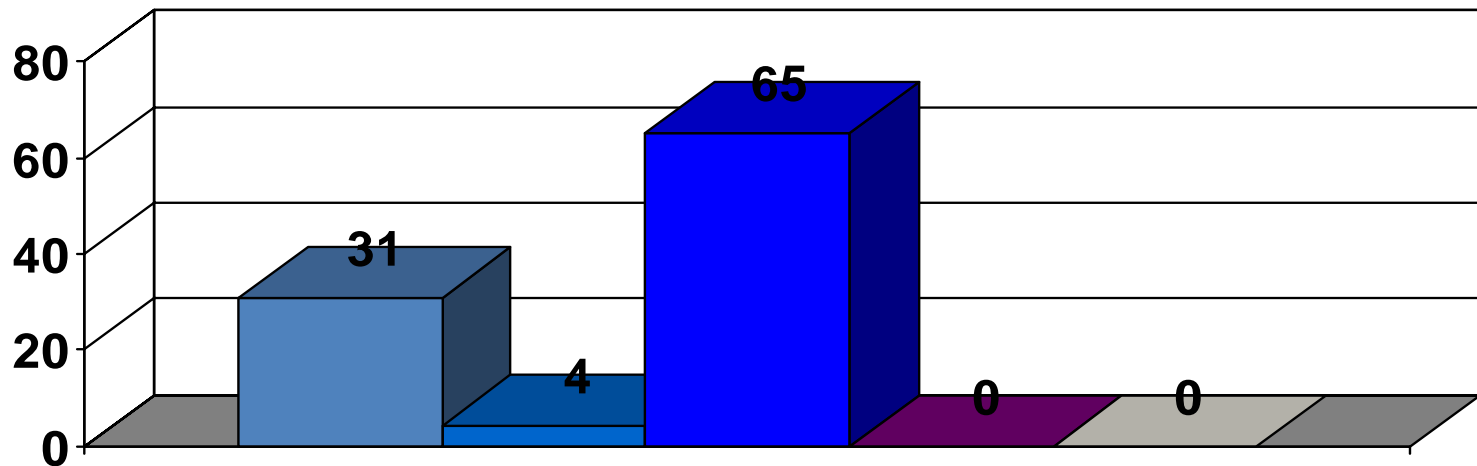
Frequency Selected



# Baltimore City: 21230

## Racial Composition

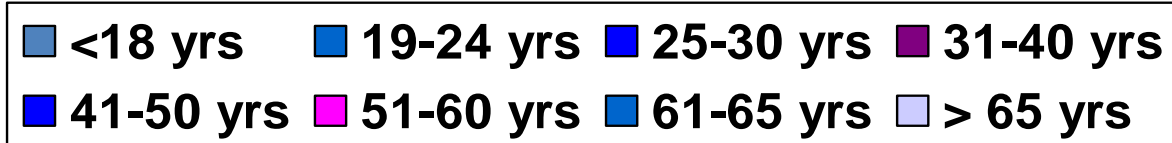
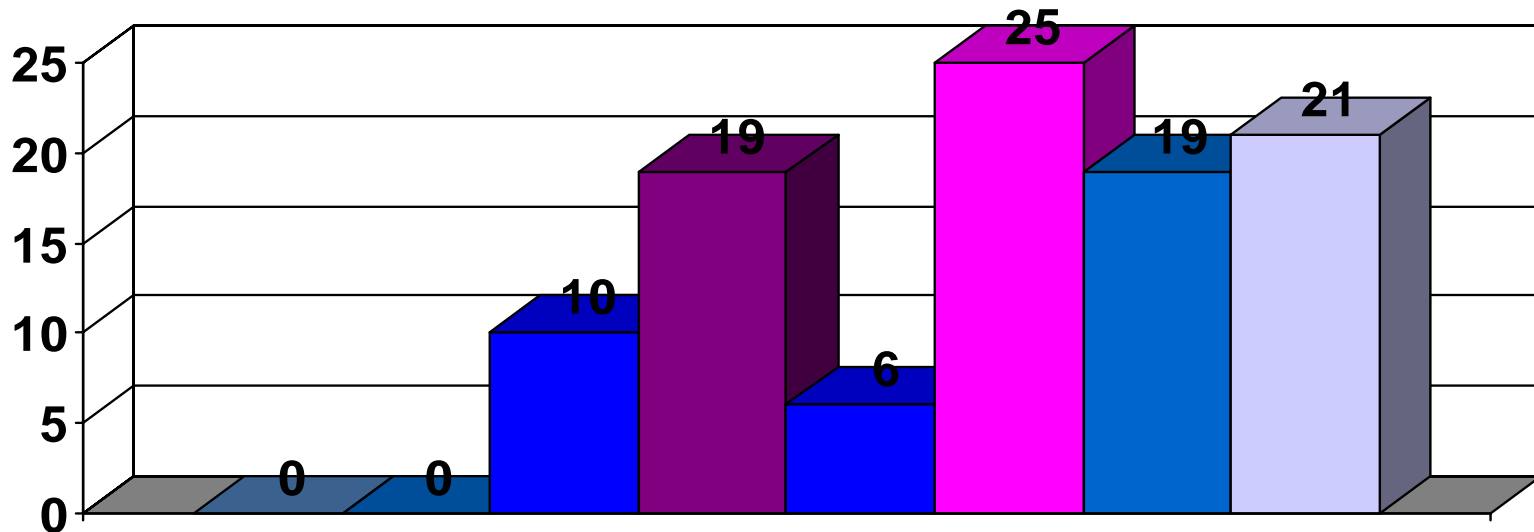
% of Respondents



# Baltimore City: 21230

## Age Group Composition

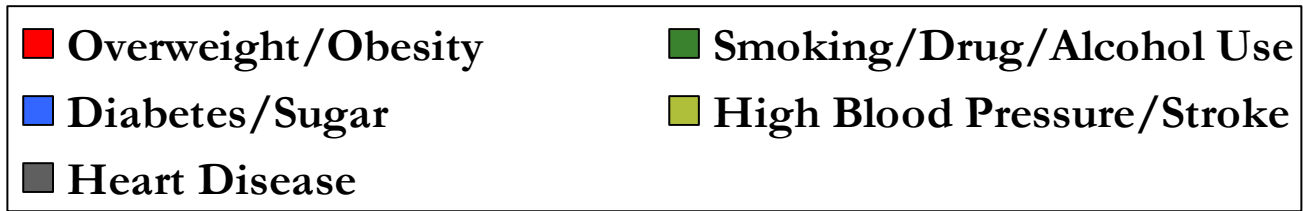
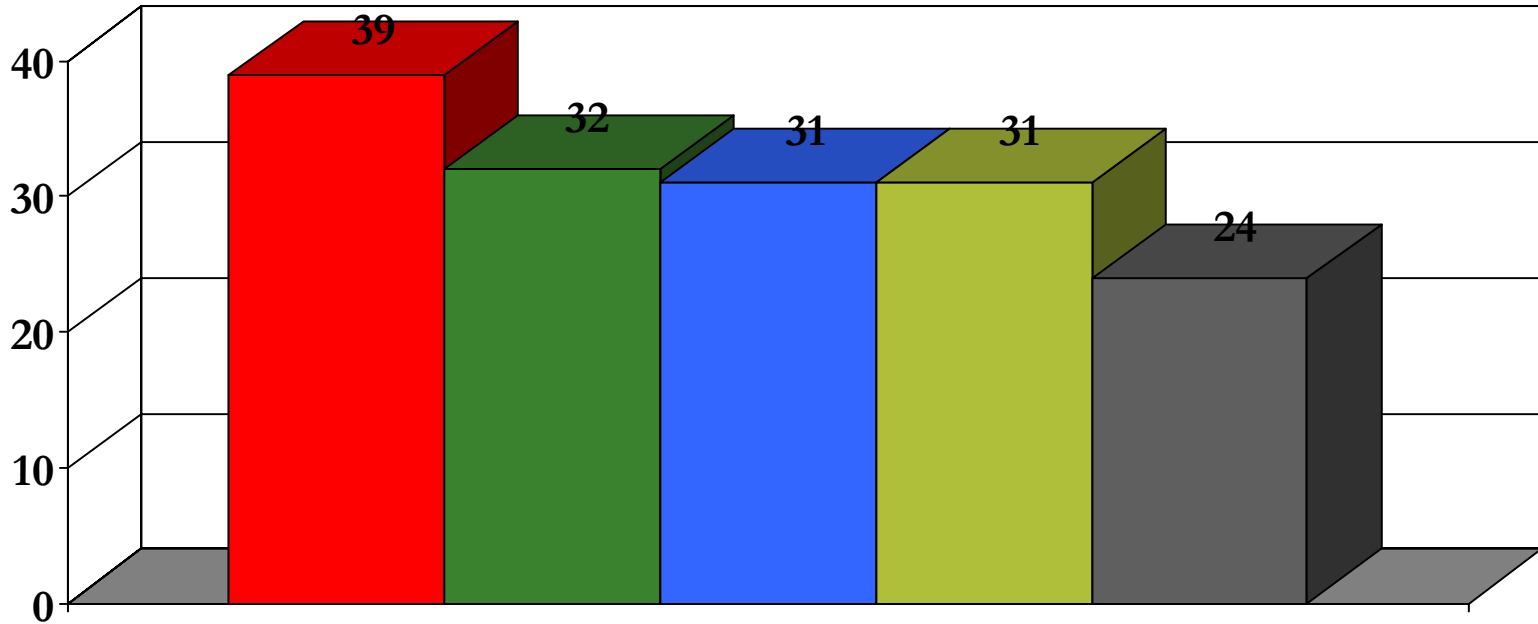
% of Respondents





# Baltimore City: 21230

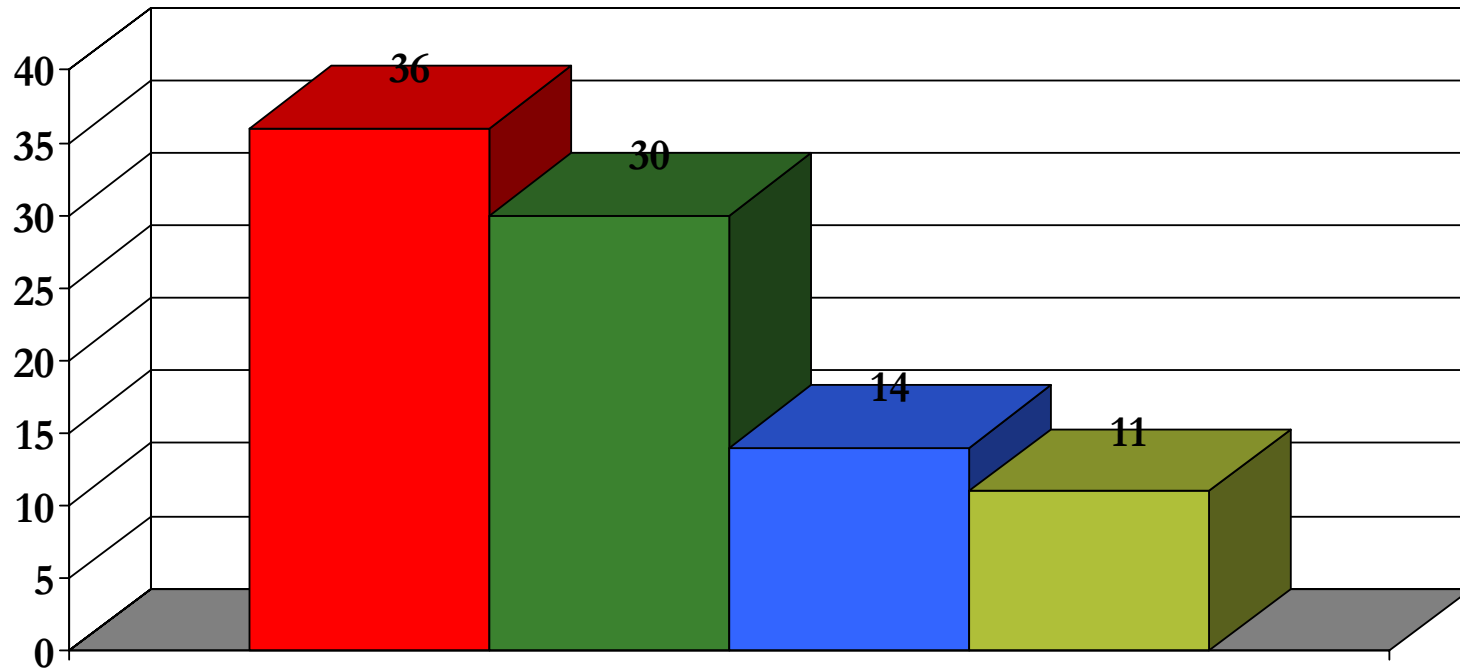
## Top 5 Health Concerns



# Baltimore City: 21230

## Top Barriers to Health Care

Frequency Selected

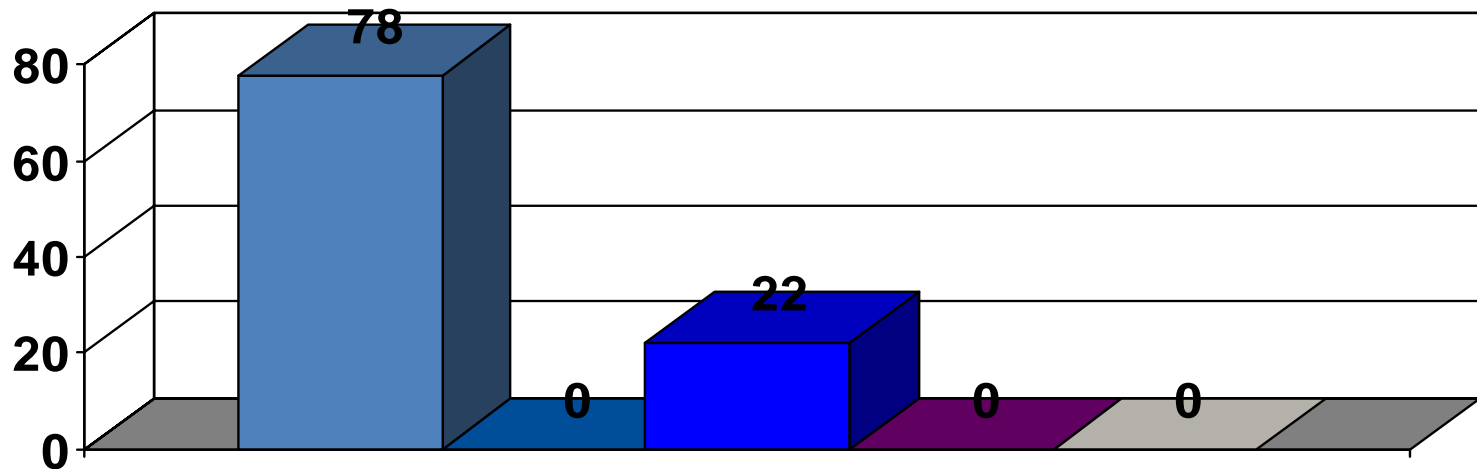


■ Too Expensive/Can't Afford It    ■ No Health Insurance  
■ No Transportation    ■ Local MDs not on my Plan

# Baltimore City: 21234

## Racial Composition

% of Respondents



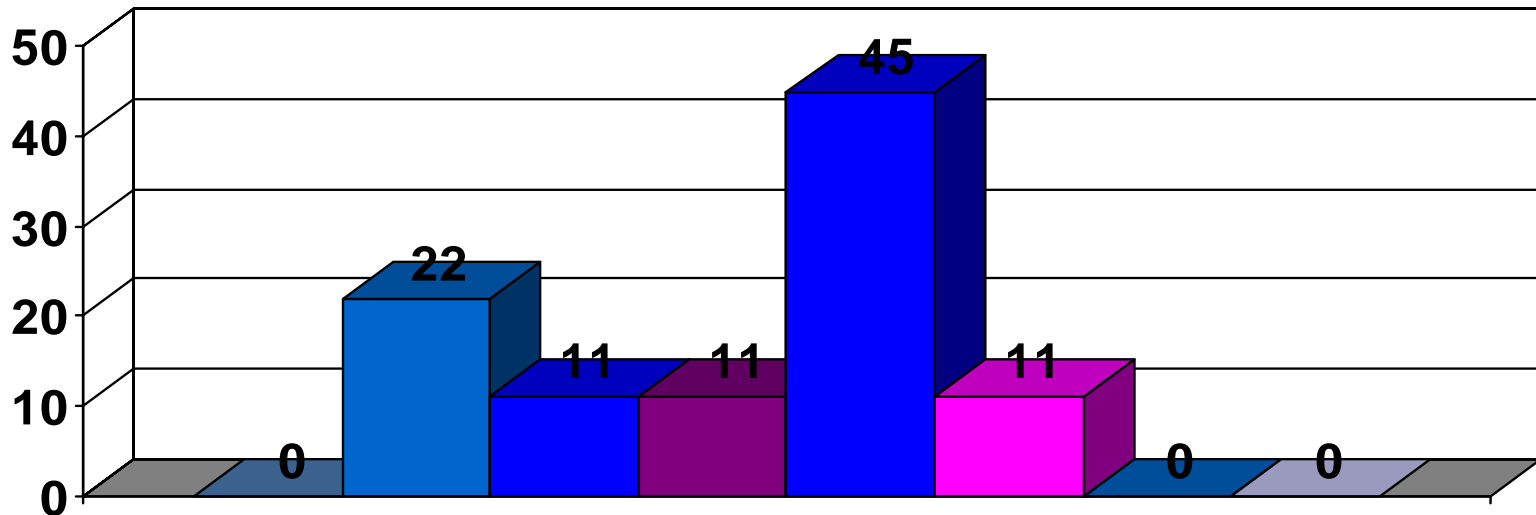
N = 9

Sample sizes <30 are not completely reliable

# Baltimore City: 21234

## Age Group Composition

% of Respondents

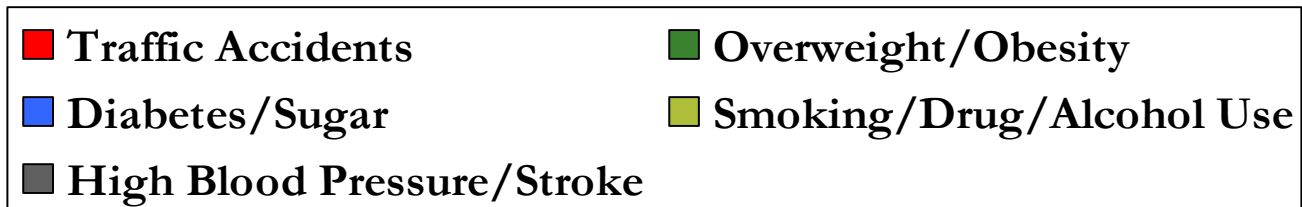
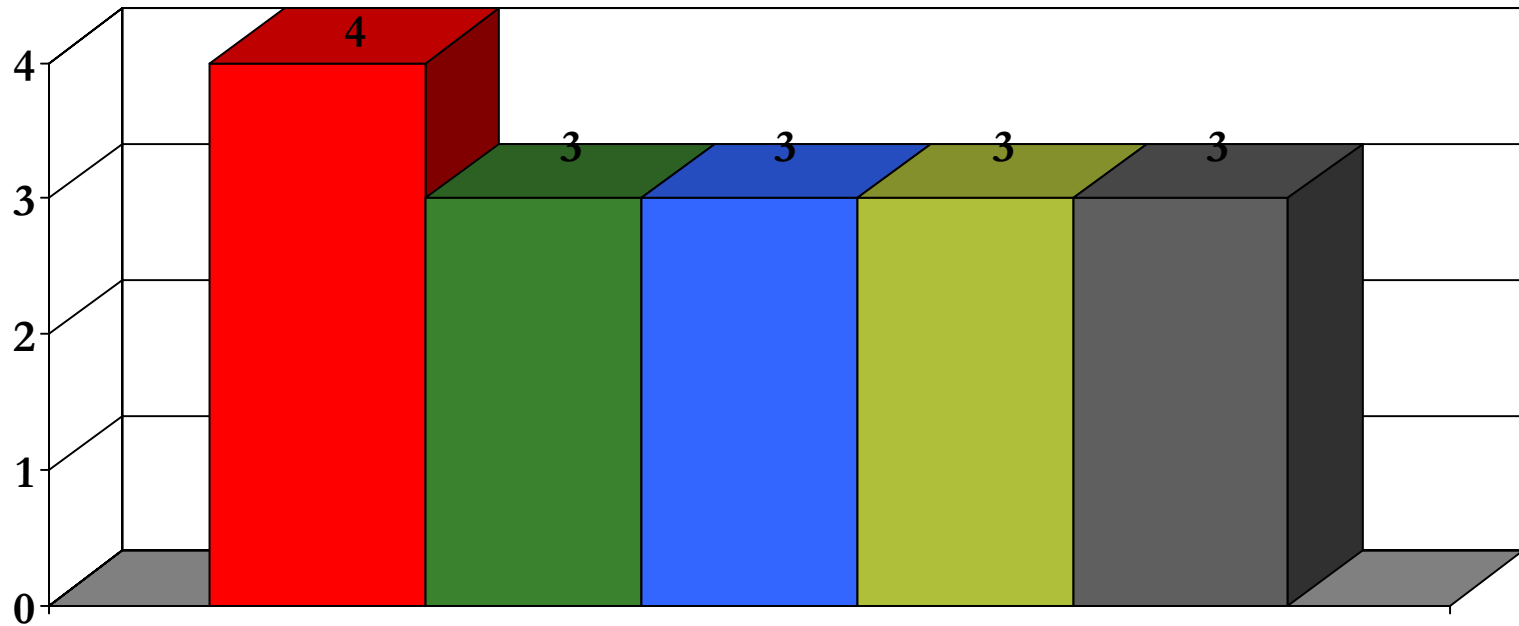


N = 9

Sample sizes <30 are not completely reliable

# Baltimore City: 21234

## Top 5 Health Concerns



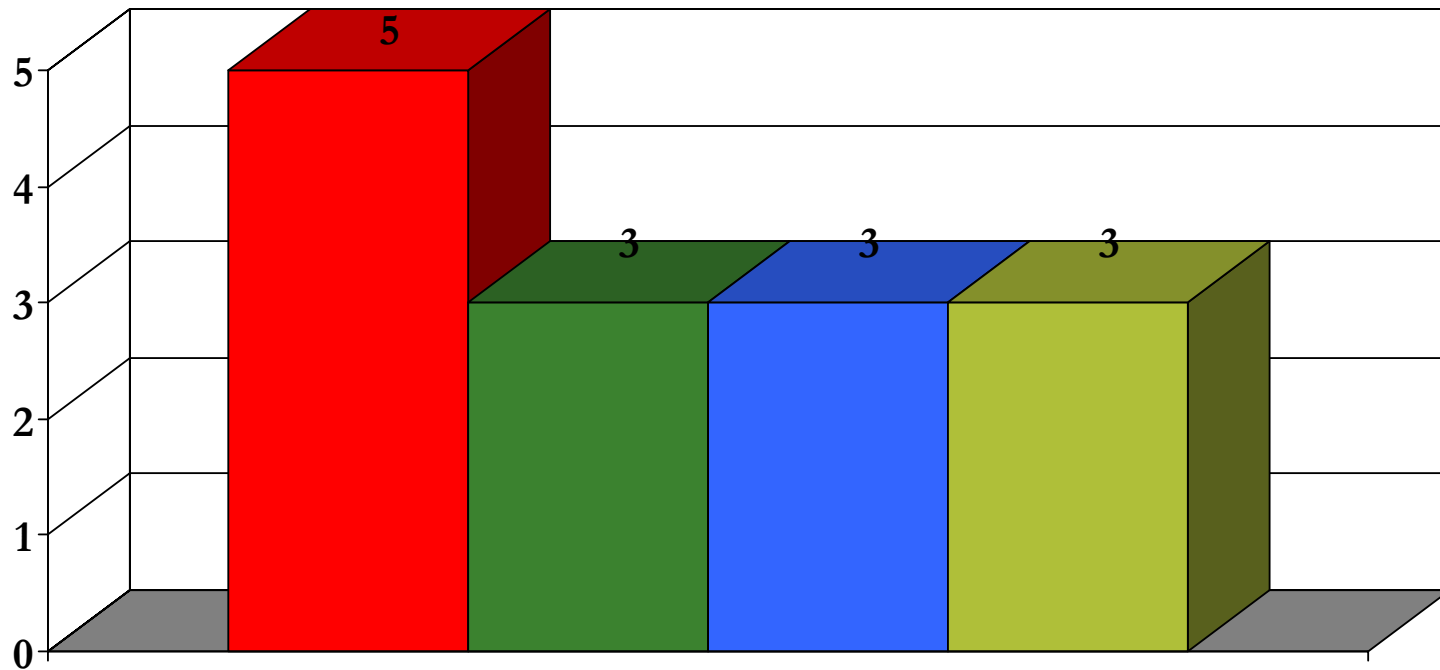
N = 9

Sample sizes <30 are not completely reliable

# Baltimore City: 21234

## Top Barriers to Health Care

Frequency Selected



■ Too Expensive/Can't Afford It   ■ No Health Insurance  
■ No Transportation   ■ Local MDs not on my Plan

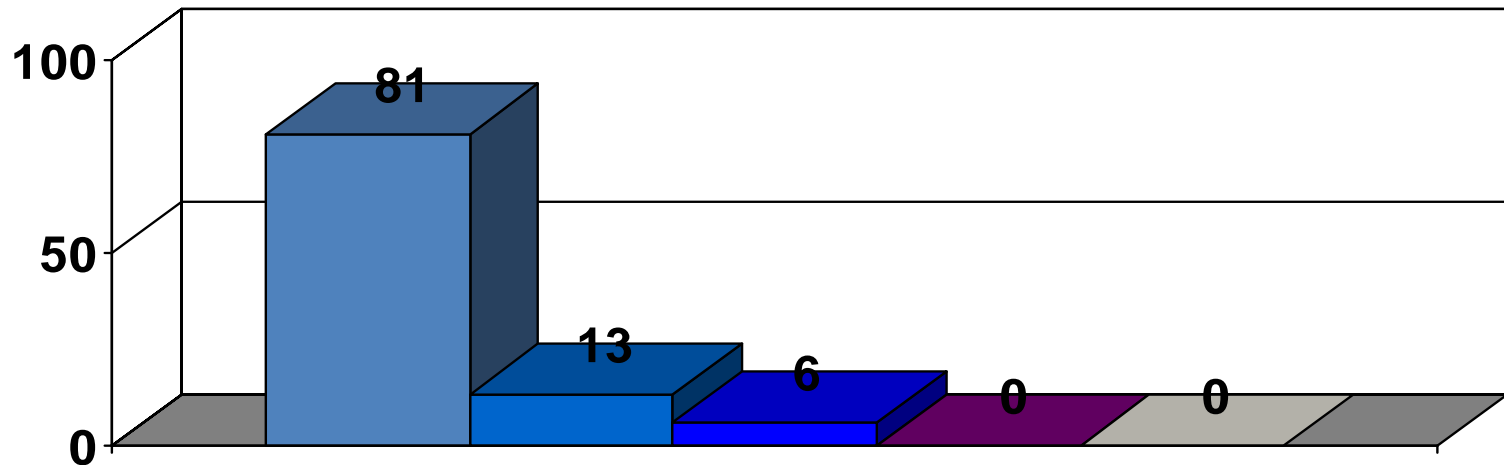
N = 9

Sample sizes <30 are not completely reliable

# Baltimore City: 21244

## Racial Composition

% of Respondents



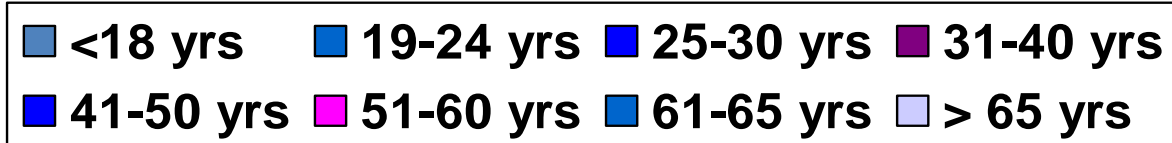
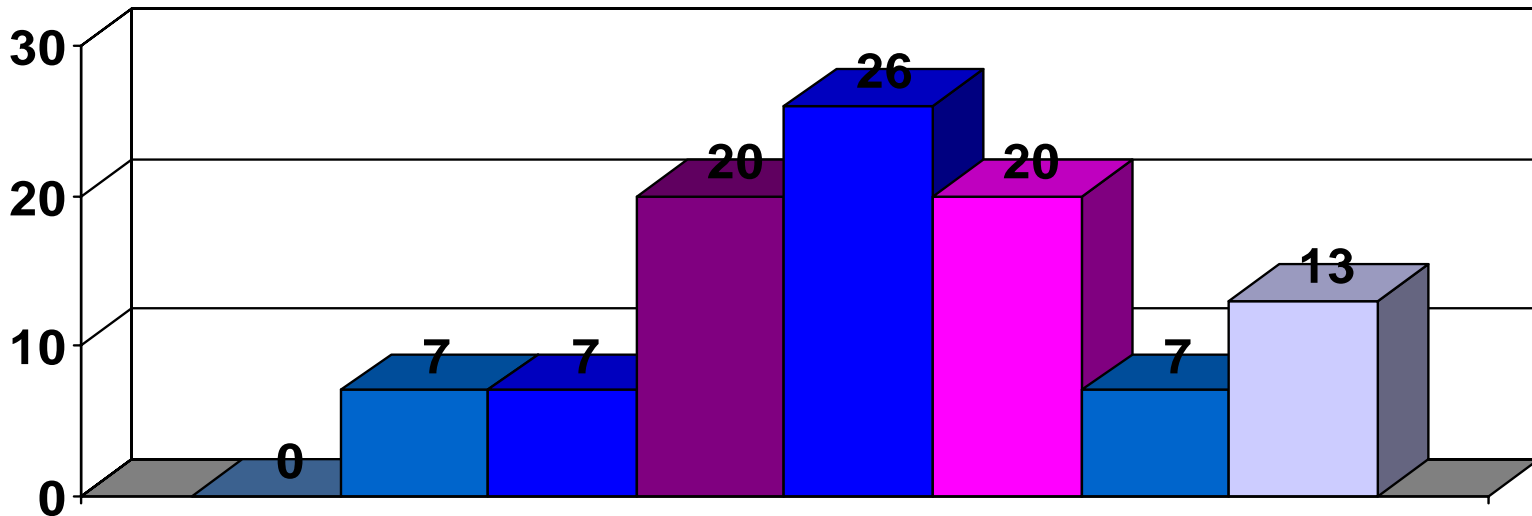
N = 16

Sample sizes <30 are not completely reliable

# Baltimore City: 21244

## Age Group Composition

% of Respondents



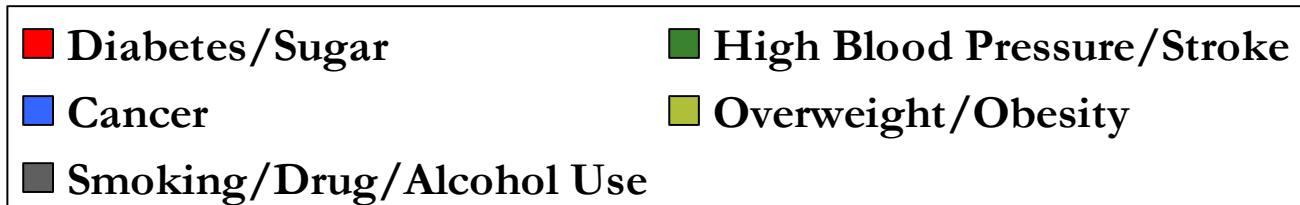
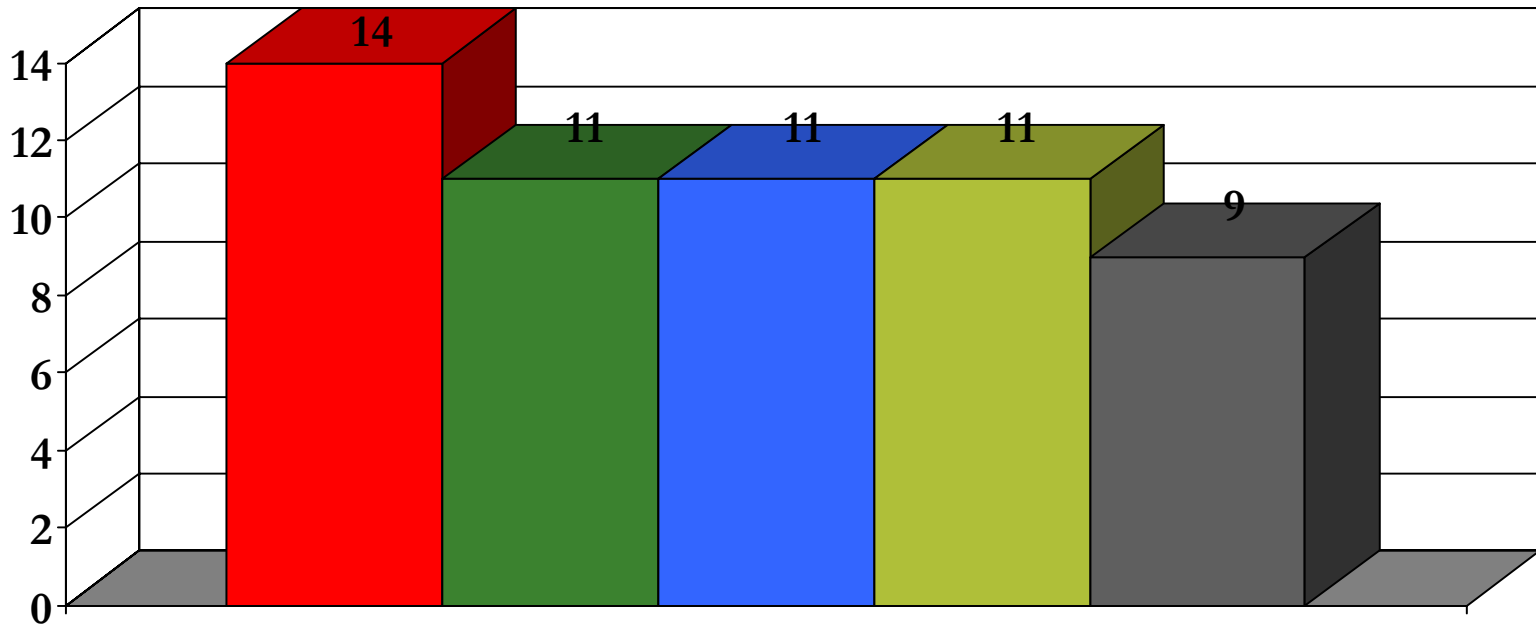
N = 16

Sample sizes <30 are not completely reliable



# Baltimore City: 21244

## Top 5 Health Concerns



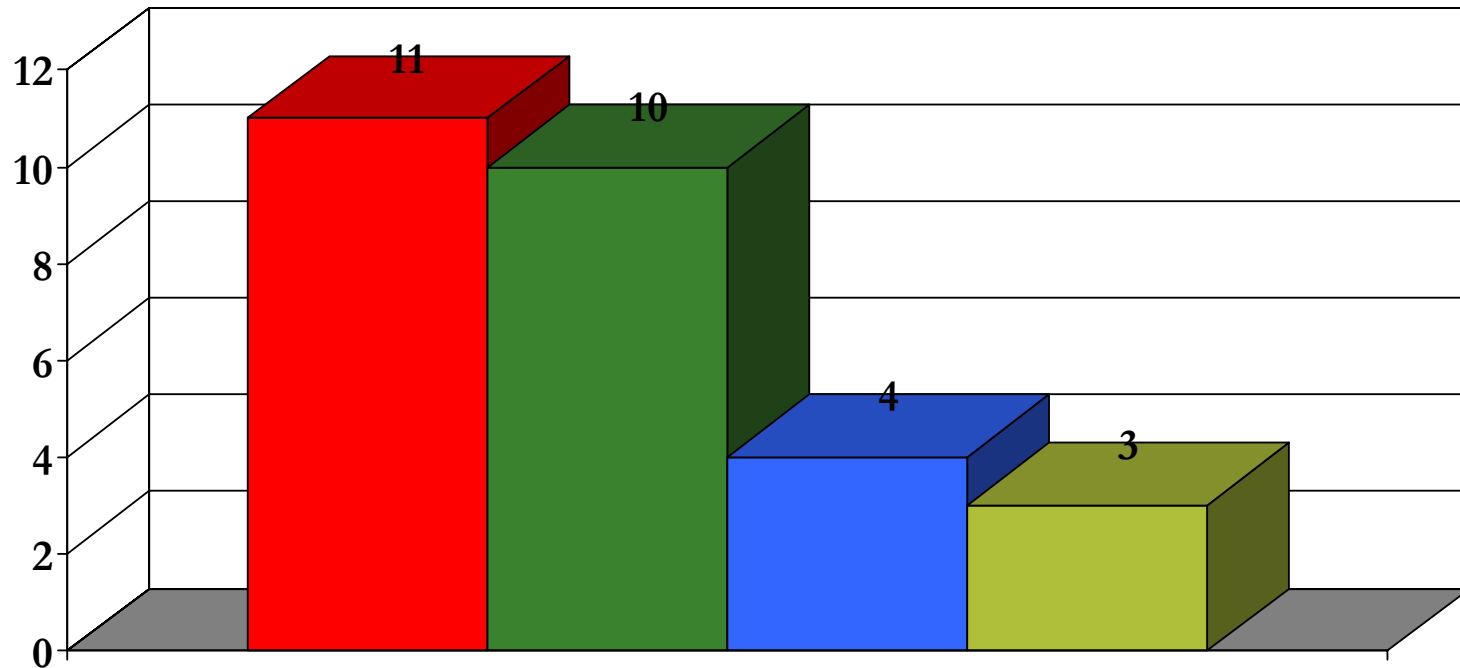
N = 16

Sample sizes <30 are not completely reliable

# Baltimore City: 21244

## Top Barriers to Health Care

Frequency Selected



**No Health Insurance**

**Too Expensive/Can't Afford It**

**No Transportation**

**Local MDs not on my Plan**

N = 16

Sample sizes <30 are not completely reliable